

Product datasheet for **TA331816**

GPR158 Rabbit Polyclonal Antibody

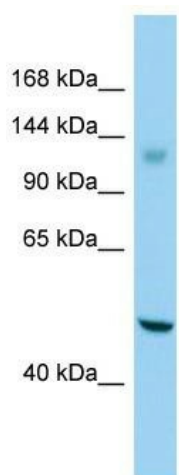
Product data:

Product Type:	Primary Antibodies
Applications:	WB
Recommended Dilution:	WB
Reactivity:	Human
Host:	Rabbit
Isotype:	IgG
Clonality:	Polyclonal
Immunogen:	The immunogen for Anti-GPR158 Antibody is: synthetic peptide directed towards the C-terminal region of Human GPR158. Synthetic peptide located within the following region: LPPKAVASKTENENLNQIGHQEKTSSSEENVRGSYNSSNNFQQPLTSRA
Formulation:	Liquid. Purified antibody supplied in 1x PBS buffer with 0.09% (w/v) sodium azide and 2% sucrose. <i>Note that this product is shipped as lyophilized powder to China customers.</i>
Conjugation:	Unconjugated
Storage:	Store at -20°C as received.
Stability:	Stable for 12 months from date of receipt.
Predicted Protein Size:	133 kDa
Gene Name:	G protein-coupled receptor 158
Database Link:	NP_065803 Entrez Gene 57512 Human Q5T848
Background:	GPR158 is a orphan receptor.
Synonyms:	RP11-59G22.1
Note:	Immunogen sequence homology: Human: 100%; Horse: 93%; Dog: 86%; Bovine: 86%
Protein Families:	Druggable Genome, Transmembrane



[View online »](#)

Product images:



Host: Rabbit; Target Name: GPR158; Sample
Tissue: Jurkat Whole Cell lysates; Antibody
Dilution: 1.0ug/ml