

Product datasheet for **TA331813**

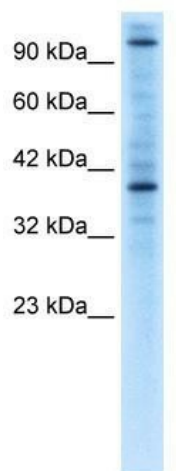
ZNF624 Rabbit Polyclonal Antibody

Product data:

Product Type:	Primary Antibodies
Applications:	WB
Recommended Dilution:	WB
Reactivity:	Human
Host:	Rabbit
Isotype:	IgG
Clonality:	Polyclonal
Immunogen:	The immunogen for Anti-ZNF624 Antibody: synthetic peptide directed towards the middle region of human ZNF624. Synthetic peptide located within the following region: PYECNECGKAFNRIFTEHQRIHTGEKPYKCNECGKAFINYSCLTVHHR
Formulation:	Liquid. Purified antibody supplied in 1x PBS buffer with 0.09% (w/v) sodium azide and 2% sucrose.
Conjugation:	Unconjugated
Storage:	Store at -20°C as received.
Stability:	Stable for 12 months from date of receipt.
Predicted Protein Size:	100 kDa
Gene Name:	zinc finger protein 624
Database Link:	NP_065838 Entrez Gene 57547 Human Q9P2J8
Background:	This gene, located on chromosome 17, encodes a protein that is part of the zinc finger family.
Synonyms:	KIAA1349; MGC119602; MGC119603; MGC119605
Note:	Immunogen sequence homology: Dog: 100%; Pig: 100%; Rat: 100%; Horse: 100%; Human: 100%; Bovine: 100%; Rabbit: 100%; Mouse: 90%; Guinea pig: 82%



[View online »](#)

Product images:


WB Suggested Anti-ZNF624 Antibody Titration:
0.2-1 ug/ml; Positive Control: Jurkat cell lysate