

Product datasheet for **TA331812**

SIPA1L2 Rabbit Polyclonal Antibody

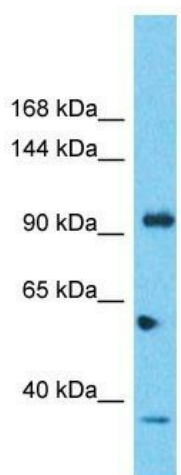
Product data:

Product Type:	Primary Antibodies
Applications:	WB
Recommended Dilution:	WB
Reactivity:	Human
Host:	Rabbit
Isotype:	IgG
Clonality:	Polyclonal
Immunogen:	The immunogen for Anti-SIPA1L2 Antibody is: synthetic peptide directed towards the C-terminal region of Human SIPA1L2. Synthetic peptide located within the following region: LRQLQTDLRKEKQDKAVLQAEVQHRLRQDNMRLQEESQTATAQLRKFTWF
Formulation:	Liquid. Purified antibody supplied in 1x PBS buffer with 0.09% (w/v) sodium azide and 2% sucrose.
Conjugation:	Unconjugated
Storage:	Store at -20°C as received.
Stability:	Stable for 12 months from date of receipt.
Predicted Protein Size:	85 kDa
Gene Name:	signal induced proliferation associated 1 like 2
Database Link:	NP_065859 Entrez Gene 57568 Human Q9P2F8
Background:	The function of this protein remains unknown.
Synonyms:	SPAL2
Note:	Immunogen sequence homology: Dog: 100%; Pig: 100%; Rat: 100%; Horse: 100%; Human: 100%; Mouse: 100%; Rabbit: 100%; Guinea pig: 100%; Zebrafish: 93%; Bovine: 79%



[View online »](#)

Product images:



Host: Rabbit
Target Name: SIPA1L2
Sample Tissue: 721_B Cell Lysate
Antibody Dilution: 1.0µg/ml

Host: Rabbit; Target Name: SIPA1L2; Sample
Tissue: 721_B Whole Cell lysates; Antibody
Dilution: 1.0ug/ml