

Product datasheet for **TA331810**

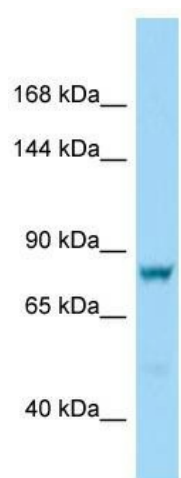
DCDC5 Rabbit Polyclonal Antibody

Product data:

Product Type:	Primary Antibodies
Applications:	WB
Recommended Dilution:	WB
Reactivity:	Human
Host:	Rabbit
Isotype:	IgG
Clonality:	Polyclonal
Immunogen:	The immunogen for Anti-DCDC5 Antibody is: synthetic peptide directed towards the N-terminal region of Human DCDC5. Synthetic peptide located within the following region: KTTEPYAPVRLRVLQNGEKNKNSVTILGPDISPGRKTQCTEILNLP SAA
Formulation:	Liquid. Purified antibody supplied in 1x PBS buffer with 0.09% (w/v) sodium azide and 2% sucrose. <i>Note that this product is shipped as lyophilized powder to China customers.</i>
Purification:	Affinity Purified
Conjugation:	Unconjugated
Storage:	Store at -20°C as received.
Stability:	Stable for 12 months from date of receipt.
Predicted Protein Size:	71 kDa
Gene Name:	doublecortin domain containing 5
Database Link:	NP_065920 Entrez Gene 341019 Human Entrez Gene 100506627 Human
Background:	The function of this protein remains unknown.
Synonyms:	DKFZp779D068; FLJ44078; FLJ46154; KIAA1493; MGC190499; MGC190811
Note:	Immunogen sequence homology: Human: 100%; Rabbit: 82%



[View online »](#)

Product images:

Host: Rabbit; Target Name: DCDC5; Sample
Tissue: Hela Whole cell lysates; Antibody Dilution:
1.0ug/ml