

Product datasheet for **TA331808**

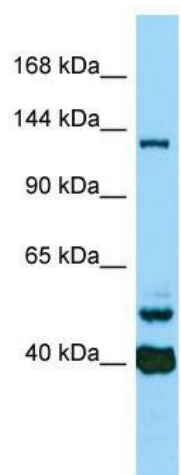
KIAA1543 (CAM SAP3) Rabbit Polyclonal Antibody

Product data:

Product Type:	Primary Antibodies
Applications:	WB
Recommended Dilution:	WB
Reactivity:	Human
Host:	Rabbit
Isotype:	IgG
Clonality:	Polyclonal
Immunogen:	The immunogen for Anti-CAM SAP3 Antibody is: synthetic peptide directed towards the C-terminal region of Human CAM SAP3. Synthetic peptide located within the following region: APSPSGLMSP SRLPGSRERDWENGSNASSPASVPEYTGPRLYKEPSAKSN
Formulation:	Liquid. Purified antibody supplied in 1x PBS buffer with 0.09% (w/v) sodium azide and 2% sucrose. <i>Note that this product is shipped as lyophilized powder to China customers.</i>
Conjugation:	Unconjugated
Storage:	Store at -20°C as received.
Stability:	Stable for 12 months from date of receipt.
Predicted Protein Size:	137 kDa
Gene Name:	calmodulin regulated spectrin associated protein family member 3
Database Link:	NP_065953 Entrez Gene 57662 Human Q9P1Y5
Background:	Microtubule minus-end binding protein that acts as a regulator of microtubule dynamics. CAM SAP3 is specifically required for zonula adherens biogenesis and maintenance by anchoring microtubules at their minus-ends to zonula adherens, leading to recruit KIFC3 kinesin to junctional site.
Synonyms:	KIAA1543; NEZHA; PPP1R80
Note:	Immunogen sequence homology: Dog: 100%; Rat: 100%; Horse: 100%; Human: 100%; Mouse: 100%; Pig: 93%; Rabbit: 93%; Bovine: 86%; Guinea pig: 79%



[View online »](#)

Product images:

Host: Rabbit; Target Name: CAMSAP3; Sample
Tissue: ACHN Whole Cell lysates; Antibody
Dilution: 1.0ug/ml