

## Product datasheet for **TA331806**

### Syntrophin (SNTB1) Rabbit Polyclonal Antibody

#### Product data:

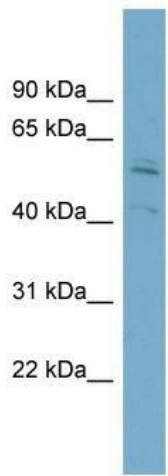
|                         |  |
|-------------------------|--|
| Product Type:           | Primary Antibodies   |
| Applications:           | WB   |
| Recommended Dilution:   | WB   |
| Reactivity:             | Human  |
| Host:                   | Rabbit   |
| Isotype:                | IgG  |
| Clonality:              | Polyclonal   |
| Immunogen:              | The immunogen for Anti-SNTB1 Antibody: synthetic peptide directed towards the N terminal of human SNTB1. Synthetic peptide located within the following region:<br>GAGAGHPGAGGAQPPDSPAGVRTAFTDLPEQVPESISNQKRGVKVLKQEL  |
| Formulation:            | Liquid. Purified antibody supplied in 1x PBS buffer with 0.09% (w/v) sodium azide and 2% sucrose.<br><i>Note that this product is shipped as lyophilized powder to China customers.</i>  |
| Conjugation:            | Unconjugated   |
| Storage:                | Store at -20°C as received.  |
| Stability:              | Stable for 12 months from date of receipt.   |
| Predicted Protein Size: | 58 kDa   |
| Gene Name:              | syntrophin beta 1  |
| Database Link:          | <a href="#">NP_066301</a><br><a href="#">Entrez Gene 6641 Human Q13884</a>   |
| Background:             | Dystrophin is a large, rod-like cytoskeletal protein found at the inner surface of muscle fibers. Dystrophin is missing in Duchenne Muscular Dystrophy patients and is present in reduced amounts in Becker Muscular Dystrophy patients. The protein encoded by this gene is a peripheral membrane protein found associated with dystrophin and dystrophin-related proteins. This gene is a member of the syntrophin gene family, which contains at least two other structurally-related genes. [provided by RefSeq, Jul 2008] |
| Synonyms:               | 59-DAP; A1B; BSYN2; DAPA1B; SNT2; SNT2B1; TIP-43   |



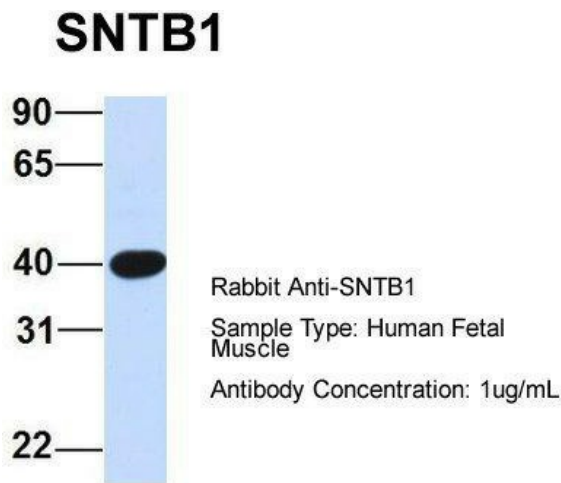
[View online »](#)

**Note:** Immunogen sequence homology: Rat: 100%; Human: 100%; Mouse: 100%; Rabbit: 100%; Dog: 93%; Horse: 93%

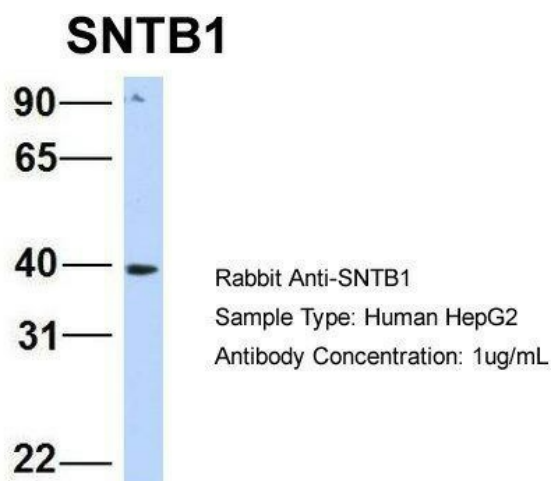
**Product images:**



WB Suggested Anti-SNTB1 Antibody Titration: 0.2-1 ug/ml; Positive Control: ACHN cell lysate



Host: Rabbit; Target Name: SNTB1; Sample Tissue: Human Fetal Muscle; Antibody Dilution: 1.0ug/ml



Host: Rabbit; Target Name: SNTB1; Sample Tissue: Human HepG2; Antibody Dilution: 1.0ug/ml; SNTB1 is strongly supported by BioGPS gene expression data to be expressed in Human HepG2 cells