

Product datasheet for **TA331802**

Cyclophilin A (PPIA) Rabbit Polyclonal Antibody

Product data:

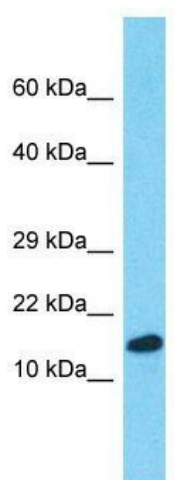
Product Type:	Primary Antibodies
Applications:	WB
Recommended Dilution:	WB
Reactivity:	Human
Host:	Rabbit
Isotype:	IgG
Clonality:	Polyclonal
Immunogen:	The immunogen for Anti-PPIA Antibody is: synthetic peptide directed towards the middle region of Human PPIA. Synthetic peptide located within the following region: NGTGGKSIYGEEKFEDENFILKHTGPGILSMANAGPNTNGSQFFICTAKTE
Formulation:	Liquid. Purified antibody supplied in 1x PBS buffer with 0.09% (w/v) sodium azide and 2% sucrose. <i>Note that this product is shipped as lyophilized powder to China customers.</i>
Conjugation:	Unconjugated
Storage:	Store at -20°C as received.
Stability:	Stable for 12 months from date of receipt.
Predicted Protein Size:	18 kDa
Gene Name:	peptidylprolyl isomerase A
Database Link:	NP_066953 Entrez Gene 5478 Human P62937
Background:	PPIA is a member of the peptidyl-prolyl cis-trans isomerase (PPIase) family. PPIases catalyze the cis-trans isomerization of proline imidic peptide bonds in oligopeptides and accelerate the folding of proteins. PPIA is a cyclosporin binding-protein and may play a role in cyclosporin A-mediated immunosuppression. The protein can also interact with several HIV proteins, including p55 gag, Vpr, and capsid protein, and has been shown to be necessary for the formation of infectious HIV virions.
Synonyms:	CYPA; CYPH; HEL-S-69p



[View online >](#)

Note: Immunogen sequence homology: Human: 100%; Yeast: 100%; Dog: 92%; Pig: 92%; Rat: 92%; Goat: 92%; Horse: 92%; Sheep: 92%; Bovine: 92%; Guinea pig: 92%; Mouse: 83%

Product images:



Host: Rabbit; Target Name: PPIA; Sample Tissue: Fetal Kidney lysates; Antibody Dilution: 1.0ug/ml