

Product datasheet for **TA331801**

RB associated KRAB repressor (RBAK) Rabbit Polyclonal Antibody

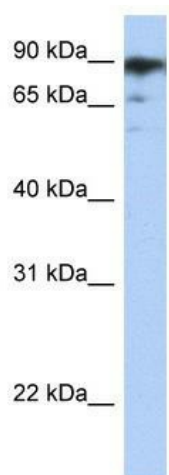
Product data:

Product Type:	Primary Antibodies
Applications:	WB
Recommended Dilution:	WB
Reactivity:	Human
Host:	Rabbit
Isotype:	IgG
Clonality:	Polyclonal
Immunogen:	The immunogen for Anti-RBAK Antibody: synthetic peptide directed towards the middle region of human RBAK. Synthetic peptide located within the following region: HYRSHLEEKPYECNECGKTFNLNSAFIRHRKVHTEEKSHCECGKFSQL
Formulation:	Liquid. Purified antibody supplied in 1x PBS buffer with 0.09% (w/v) sodium azide and 2% sucrose.
Conjugation:	Unconjugated
Storage:	Store at -20°C as received.
Stability:	Stable for 12 months from date of receipt.
Predicted Protein Size:	83 kDa
Gene Name:	RB associated KRAB zinc finger
Database Link:	NP_066986 Entrez Gene 57786 Human Q9NYW8
Background:	RBAK is a nuclear protein which interacts with the tumor suppressor retinoblastoma 1. The two interacting proteins are thought to act as a transcriptional repressor for promoters which are activated by the E2F1 transcription factor. This protein contains a Kruppel-associated box (KRAB), which is a transcriptional repressor motif.
Synonyms:	ZNF769
Note:	Immunogen sequence homology: Dog: 100%; Pig: 100%; Rat: 100%; Horse: 100%; Human: 100%; Bovine: 100%; Guinea pig: 100%; Mouse: 93%; Rabbit: 79%
Protein Families:	Druggable Genome, Transcription Factors



[View online »](#)

Product images:



WB Suggested Anti-RBAK Antibody; Titration: 1.25 ug/ml; Positive Control: NTERA2