

## Product datasheet for **TA331800**

### RB associated KRAB repressor (RBAK) Rabbit Polyclonal Antibody

#### Product data:

Product Type:	Primary Antibodies
Applications:	IHC, WB
Recommended Dilution:	WB, IHC
Reactivity:	Human
Host:	Rabbit
Isotype:	IgG
Clonality:	Polyclonal
Immunogen:	The immunogen for Anti-RBAK Antibody: synthetic peptide directed towards the middle region of human RBAK. Synthetic peptide located within the following region: HYRSHLEEKPYECNECGKTFNLNSAFIRHRKVHTEEKSHECSECGKFSQL
Formulation:	Liquid. Purified antibody supplied in 1x PBS buffer with 0.09% (w/v) sodium azide and 2% sucrose.
Conjugation:	Unconjugated
Storage:	Store at -20°C as received.
Stability:	Stable for 12 months from date of receipt.
Predicted Protein Size:	83 kDa
Gene Name:	RB associated KRAB zinc finger
Database Link:	<a href="#">NP_066986</a> <a href="#">Entrez Gene 57786 Human</a> <a href="#">Q9NYW8</a>
Background:	RBAK encodes a nuclear protein which interacts with the tumor suppressor retinoblastoma 1. The two interacting proteins are thought to act as a transcriptional repressor for promoters which are activated by the E2F1 transcription factor. This protein contains a Kruppel-associated box (KRAB), which is a transcriptional repressor motif. This gene encodes a nuclear protein which interacts with the tumor suppressor retinoblastoma 1. The two interacting proteins are thought to act as a transcriptional repressor for promoters which are activated by the E2F1 transcription factor. This protein contains a Kruppel-associated box (KRAB), which is a transcriptional repressor motif.



[View online »](#)

**Synonyms:** ZNF769

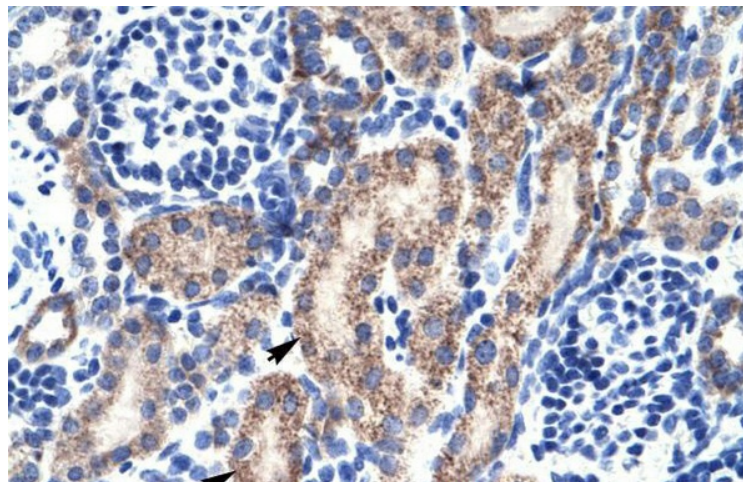
**Note:** Immunogen sequence homology: Dog: 100%; Pig: 100%; Rat: 100%; Horse: 100%; Human: 100%; Bovine: 100%; Guinea pig: 100%; Mouse: 93%; Rabbit: 79%

**Protein Families:** Druggable Genome, Transcription Factors

**Product images:**



WB Suggested Anti-RBAK Antibody Titration: 0.2-1 ug/ml; ELISA Titer: 1: 1562500; Positive Control: HepG2 cell lysate



Human kidney