

## Product datasheet for **TA331798**

### Ocular development associated gene (GATAD1) Rabbit Polyclonal Antibody

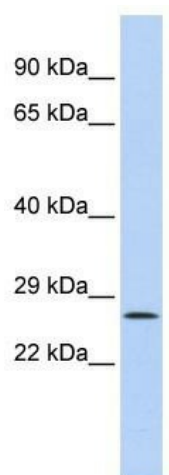
#### Product data:

|                         |  |
|-------------------------|--|
| Product Type:           | Primary Antibodies   |
| Applications:           | WB   |
| Recommended Dilution:   | WB   |
| Reactivity:             | Human  |
| Host:                   | Rabbit   |
| Isotype:                | IgG  |
| Clonality:              | Polyclonal   |
| Immunogen:              | The immunogen for Anti-GATAD1 Antibody: synthetic peptide directed towards the middle region of human GATAD1. Synthetic peptide located within the following region:<br>EKSAALTWLIPTLSSPRDQFDPASYIIGPEEDLPRKMEYLEFVCHAPSEY |
| Formulation:            | Liquid. Purified antibody supplied in 1x PBS buffer with 0.09% (w/v) sodium azide and 2% sucrose.<br><i>Note that this product is shipped as lyophilized powder to China customers.</i>                                    |
| Conjugation:            | Unconjugated   |
| Storage:                | Store at -20°C as received.  |
| Stability:              | Stable for 12 months from date of receipt.   |
| Predicted Protein Size: | 29 kDa   |
| Gene Name:              | GATA zinc finger domain containing 1   |
| Database Link:          | <a href="#">NP_066990</a><br><a href="#">Entrez Gene 57798 Human</a><br><a href="#">Q8WJU5</a>   |
| Background:             | The exact function of GATAD1 remains unknown.  |
| Synonyms:               | CMD2B; ODAG; RG083M05.2  |
| Note:                   | Immunogen sequence homology: Dog: 100%; Pig: 100%; Rat: 100%; Horse: 100%; Human: 100%; Mouse: 100%; Rabbit: 100%; Guinea pig: 100%; Bovine: 92%; Zebrafish: 77%   |
| Protein Families:       | Transcription Factors  |



[View online »](#)

## Product images:



WB Suggested Anti-GATAD1 Antibody Titration:  
0.2-1 ug/ml; ELISA Titer: 1: 312500; Positive  
Control: HepG2 cell lysate