

Product datasheet for **TA331797**

Ocular development associated gene (GATAD1) Rabbit Polyclonal Antibody

Product data:

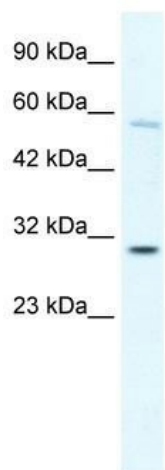
Product Type:	Primary Antibodies
Applications:	WB
Recommended Dilution:	WB
Reactivity:	Human
Host:	Rabbit
Isotype:	IgG
Clonality:	Polyclonal
Immunogen:	The immunogen for Anti-GATAD1 Antibody: synthetic peptide directed towards the C terminal of human GATAD1. Synthetic peptide located within the following region: KMEYLEFVCHAPSEYFKSRSSPFPTVPTRPEKGYIWITHVGPTPAITIKES
Formulation:	Liquid. Purified antibody supplied in 1x PBS buffer with 0.09% (w/v) sodium azide and 2% sucrose. <i>Note that this product is shipped as lyophilized powder to China customers.</i>
Conjugation:	Unconjugated
Storage:	Store at -20°C as received.
Stability:	Stable for 12 months from date of receipt.
Predicted Protein Size:	29 kDa
Gene Name:	GATA zinc finger domain containing 1
Database Link:	NP_066990 Entrez Gene 57798 Human Q8WUU5
Background:	ODAG (Ocular development-associated gene), a novel transcription factor located on chromosome 7, encodes a protein that may play a role in eye development. mRNA profiling in multiple human tissue indicates that ODAG is expressed in human CD56+ NK cells and thyroid tissue.
Synonyms:	CMD2B; ODAG; RG083M05.2
Note:	Immunogen sequence homology: Dog: 100%; Pig: 100%; Rat: 100%; Horse: 100%; Human: 100%; Mouse: 100%; Bovine: 100%; Rabbit: 100%; Guinea pig: 100%; Zebrafish: 92%



[View online »](#)

Protein Families: Transcription Factors

Product images:



WB Suggested Anti-GATAD1 Antibody Titration:
0.2-1 ug/ml; ELISA Titer: 1: 62500; Positive
Control: K562 cell lysate GATAD1 is strongly
supported by BioGPS gene expression data to be
expressed in Human K562 cells