

Product datasheet for **TA331796**

ZNF410 Rabbit Polyclonal Antibody

Product data:

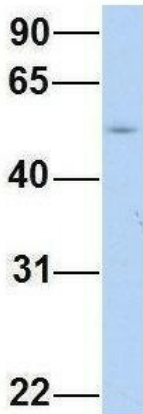
| | |
|-------------------------|---|
| Product Type: | Primary Antibodies |
| Applications: | WB |
| Recommended Dilution: | WB |
| Reactivity: | Human |
| Host: | Rabbit |
| Isotype: | IgG |
| Clonality: | Polyclonal |
| Immunogen: | The immunogen for Anti-ZNF410 Antibody: synthetic peptide directed towards the N terminal of human ZNF410. Synthetic peptide located within the following region: DITCLSLLPVTEASECSRLMLPDDTTNHSNSSKEVPSSAVLRSLRVNVGP |
| Formulation: | Liquid. Purified antibody supplied in 1x PBS buffer with 0.09% (w/v) sodium azide and 2% sucrose. |
| Conjugation: | Unconjugated |
| Storage: | Store at -20°C as received. |
| Stability: | Stable for 12 months from date of receipt. |
| Predicted Protein Size: | 52 kDa |
| Gene Name: | zinc finger protein 410 |
| Database Link: | NP_067011 Entrez Gene 57862 Human Q86VK4 |
| Background: | ZNF410 is the transcription factor that activates transcription of matrix-remodeling genes such as MMP1 during fibroblast senescence. |
| Synonyms: | APA-1; APA1 |
| Note: | Immunogen sequence homology: Dog: 100%; Rat: 100%; Horse: 100%; Human: 100%; Mouse: 100%; Bovine: 100%; Rabbit: 100%; Pig: 92%; Guinea pig: 92% |
| Protein Families: | Transcription Factors |



[View online »](#)

Product images:

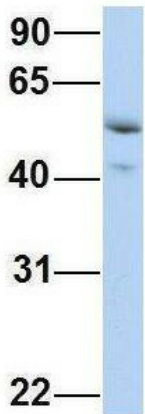
ZNF410



Rabbit Anti-ZNF410
Sample Type: Human Adult Placenta
Antibody Concentration: 1ug/mL

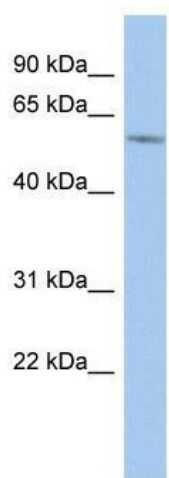
Host: Rabbit; Target Name: ZNF410; Sample Tissue: Human Adult Placenta; Antibody Dilution: 1.0ug/ml

ZNF410



Rabbit Anti-ZNF410
Sample Type: Human Fetal Lung
Antibody Concentration: 1ug/mL

Host: Rabbit; Target Name: ZNF410; Sample Tissue: Human Fetal Lung; Antibody Dilution: 1.0ug/ml



WB Suggested Anti-ZNF410 Antibody Titration:
0.2-1 ug/ml; ELISA Titer: 1: 62500; Positive
Control: HT1080 cell lysate ZNF410 is supported
by BioGPS gene expression data to be expressed
in HT1080