

## Product datasheet for TA331795

### OVOL2 Rabbit Polyclonal Antibody

#### Product data:

<b>Product Type:</b>	Primary Antibodies
<b>Applications:</b>	WB
<b>Recommended Dilution:</b>	WB
<b>Reactivity:</b>	Human
<b>Host:</b>	Rabbit
<b>Isotype:</b>	IgG
<b>Clonality:</b>	Polyclonal
<b>Immunogen:</b>	The immunogen for Anti-OVOL2 Antibody: synthetic peptide directed towards the middle region of human OVOL2. Synthetic peptide located within the following region: VCEDCGYTGPTQEDLYLHVNSAHPGSSFLKKTSKKLAALLQGKL TSAHQE
<b>Formulation:</b>	Liquid. Purified antibody supplied in 1x PBS buffer with 0.09% (w/v) sodium azide and 2% sucrose. <i>Note that this product is shipped as lyophilized powder to China customers.</i>
<b>Conjugation:</b>	Unconjugated
<b>Storage:</b>	Store at -20°C as received.
<b>Stability:</b>	Stable for 12 months from date of receipt.
<b>Predicted Protein Size:</b>	30 kDa
<b>Gene Name:</b>	ovo like zinc finger 2
<b>Database Link:</b>	<a href="#">NP_067043</a> <a href="#">Entrez Gene 58495 Human</a> <a href="#">Q9BRP0</a>
<b>Background:</b>	OVOL2 contains 4 C2H2-type zinc fingers. It belongs to the krueppel C2H2-type zinc-finger protein family. It is a DNA-binding protein that binds to the 5'-G[GCT]GGGGG-3' core sequence. Probably acts as a transcription regulator.

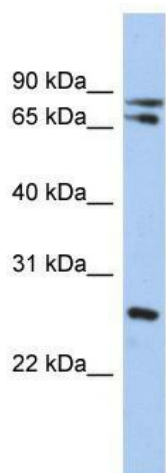


**Synonyms:** EUROIMAGE566589; ZNF339

**Note:** Immunogen sequence homology: Dog: 100%; Rat: 100%; Horse: 100%; Human: 100%; Mouse: 100%; Bovine: 100%; Rabbit: 100%; Pig: 92%; Guinea pig: 92%

**Protein Families:** Transcription Factors

**Product images:**



WB Suggested Anti-OVOL2 Antibody Titration:  
0.2-1 ug/ml; ELISA Titer: 1: 62500; Positive  
Control: HT1080 cell lysate