

Product datasheet for **TA331793**

EPS15R (EPS15L1) Rabbit Polyclonal Antibody

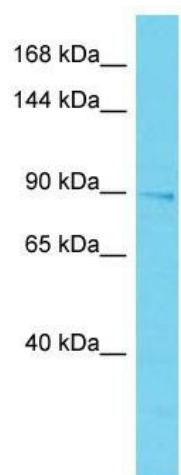
Product data:

Product Type:	Primary Antibodies
Applications:	WB
Recommended Dilution:	WB
Reactivity:	Human
Host:	Rabbit
Isotype:	IgG
Clonality:	Polyclonal
Immunogen:	The immunogen for Anti-EPS15L1 Antibody is: synthetic peptide directed towards the C-terminal region of Human EPS15L1. Synthetic peptide located within the following region: GFSDDPFKSKQDTPALPPKKPAPPRPKPPSGKSTPVSQ LGSADFPEAPDP
Formulation:	Liquid. Purified antibody supplied in 1x PBS buffer with 0.09% (w/v) sodium azide and 2% sucrose. <i>Note that this product is shipped as lyophilized powder to China customers.</i>
Conjugation:	Unconjugated
Storage:	Store at -20°C as received.
Stability:	Stable for 12 months from date of receipt.
Predicted Protein Size:	95 kDa
Gene Name:	epidermal growth factor receptor pathway substrate 15 like 1
Database Link:	NP_067058 Entrez Gene 58513 Human Q9UBC2
Background:	EPS15L1 seems to be a constitutive component of clathrin-coated pits that is required for receptor-mediated endocytosis.
Synonyms:	EPS15R
Note:	Immunogen sequence homology: Dog: 100%; Rat: 100%; Horse: 100%; Human: 100%; Mouse: 100%; Rabbit: 100%; Pig: 86%; Guinea pig: 86%
Protein Families:	Druggable Genome



[View online »](#)

Product images:



Host: Rabbit; Target Name: EPS15L1; Sample
Tissue: Placenta lysates; Antibody Dilution:
1.0ug/ml