

## Product datasheet for **TA331792**

### DMRT3 Rabbit Polyclonal Antibody

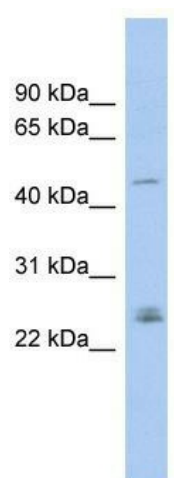
#### Product data:

Product Type:	Primary Antibodies
Applications:	WB
Recommended Dilution:	WB
Reactivity:	Human
Host:	Rabbit
Isotype:	IgG
Clonality:	Polyclonal
Immunogen:	The immunogen for Anti-DMRT3 Antibody: synthetic peptide directed towards the middle region of human DMRT3. Synthetic peptide located within the following region: ALQAQLAKPDLTEERLGDGKSADNTEVFSDKDTDQRSSPDVAKSKGCFTP
Formulation:	Liquid. Purified antibody supplied in 1x PBS buffer with 0.09% (w/v) sodium azide and 2% sucrose. <i>Note that this product is shipped as lyophilized powder to China customers.</i>
Conjugation:	Unconjugated
Storage:	Store at -20°C as received.
Stability:	Stable for 12 months from date of receipt.
Predicted Protein Size:	51 kDa
Gene Name:	doublesex and mab-3 related transcription factor 3
Database Link:	<a href="#">NP_067063</a> <a href="#">Entrez Gene 58524 Human</a> <a href="#">Q9NQL9</a>
Background:	DMRT3 may regulate transcription during sexual development.
Synonyms:	DMRTA3
Note:	Immunogen sequence homology: Human: 100%; Bovine: 100%; Pig: 93%; Rat: 93%; Horse: 93%; Mouse: 93%; Rabbit: 93%; Guinea pig: 93%; Dog: 79%



[View online »](#)

## Product images:



WB Suggested Anti-DMRT3 Antibody Titration:  
0.2-1 ug/ml; ELISA Titer: 1: 62500; Positive  
Control: PANC1 cell lysate