

Product datasheet for TA331791

RAB18 Rabbit Polyclonal Antibody

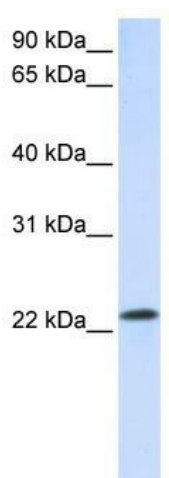
Product data:

Product Type:	Primary Antibodies
Applications:	WB
Recommended Dilution:	WB
Reactivity:	Human
Host:	Rabbit
Isotype:	IgG
Clonality:	Polyclonal
Immunogen:	The immunogen for Anti-RAB18 Antibody: synthetic peptide directed towards the C terminal of human RAB18. Synthetic peptide located within the following region: LFIEASAKTCDGVQCAFEELVEKIIQTPGLWESENQNKGVKLSHREEGQG
Formulation:	Liquid. Purified antibody supplied in 1x PBS buffer with 0.09% (w/v) sodium azide and 2% sucrose. <i>Note that this product is shipped as lyophilized powder to China customers.</i>
Conjugation:	Unconjugated
Storage:	Store at -20°C as received.
Stability:	Stable for 12 months from date of receipt.
Predicted Protein Size:	23 kDa
Gene Name:	RAB18, member RAS oncogene family
Database Link:	NP_067075 Entrez Gene 22931 Human Q9NP72
Background:	RAB18 belongs to the small GTPase superfamily. The protein plays a role in apical endocytosis/recycling and may be implicated in transport between the plasma membrane and early endosomes
Synonyms:	RAB18LI1; WARBM3
Note:	Immunogen sequence homology: Horse: 100%; Human: 100%; Mouse: 100%; Dog: 92%; Pig: 92%; Rat: 92%; Goat: 92%; Bovine: 92%; Rabbit: 92%; Guinea pig: 92%
Protein Families:	Druggable Genome



[View online »](#)

Product images:



WB Suggested Anti-RAB18 Antibody Titration: 0.2-1 ug/ml; ELISA Titer: 1: 312500; Positive Control: Hela cell lysate