

Product datasheet for **TA331789**

BARX1 Rabbit Polyclonal Antibody

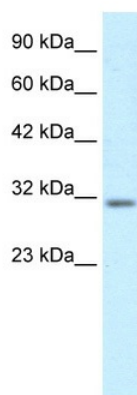
Product data:

Product Type:	Primary Antibodies
Reactivity:	Human
Host:	Rabbit
Isotype:	IgG
Clonality:	Polyclonal
Immunogen:	The immunogen for Anti-BARX1 Antibody: synthetic peptide directed towards the middle region of human BARX1. Synthetic peptide located within the following region: PLGCSGLSSALLAAGPGLPGAAGAPHLPLELQLRGKLEAAGPGEPGTKAK
Formulation:	Shipped as lyophilized powder. Purified antibody supplied in 1x PBS buffer with 0.09% (w/v) sodium azide and 2% sucrose. <i>Note that this product is shipped as lyophilized powder to China customers.</i>
Conjugation:	Unconjugated
Storage:	Store at -20°C as received.
Stability:	Stable for 12 months from date of receipt.
Predicted Protein Size:	27 kDa
Database Link:	NP_067545 Entrez Gene 56033 Human
Background:	BARX1 belongs to the Bar subclass of the homeobox gene family. The function of this gene has not yet been determined; however, studies in the mouse and chick homolog suggest a role in developing teeth and craniofacial mesenchyme of neural crest origin. The role of these homologs implicates the human gene as a candidate for unmapped disorders involving tooth and jaw development.
Synonyms:	BarH-like homeobox 1; BARX homeobox 1
Note:	Immunogen sequence homology: Pig: 100%; Human: 100%; Bovine: 100%; Rabbit: 100%; Guinea pig: 93%; Dog: 86%; Rat: 86%; Mouse: 86%
Protein Families:	Transcription Factors



[View online »](#)

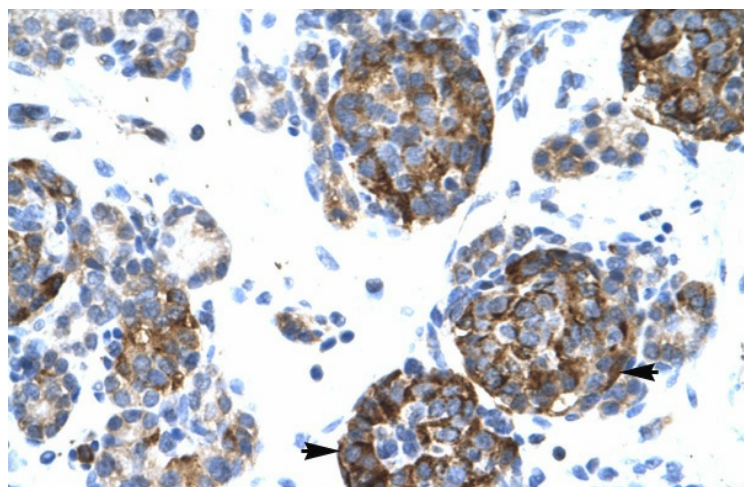
Product images:



WB Suggested Anti-BARX1 Antibody Titration: 0.2-1 ug/ml
ELISA Titer: 1:1562500
Positive Control: Jurkat cell lysate



Human Heart



Human Pancreas