

## Product datasheet for **TA331788**

### PRDM12 Rabbit Polyclonal Antibody

#### Product data:

Product Type:	Primary Antibodies
Applications:	WB
Recommended Dilution:	WB
Reactivity:	Human
Host:	Rabbit
Isotype:	IgG
Clonality:	Polyclonal
Immunogen:	The immunogen for Anti-PRDM12 Antibody: synthetic peptide directed towards the N terminal of human PRDM12. Synthetic peptide located within the following region: SFLYGRWRNVLGELQFEDKSHHASPKTAFTAEVLAQSFSGGEVQKLSSLVL
Formulation:	Liquid. Purified antibody supplied in 1x PBS buffer with 0.09% (w/v) sodium azide and 2% sucrose. <i>Note that this product is shipped as lyophilized powder to China customers.</i>
Conjugation:	Unconjugated
Storage:	Store at -20°C as received.
Stability:	Stable for 12 months from date of receipt.
Predicted Protein Size:	40 kDa
Gene Name:	PR domain 12
Database Link:	<a href="#">NP_067632</a> <a href="#">Entrez Gene 59335 Human</a> <a href="#">Q9H4Q4</a>
Background:	PRDM12 belongs to PR-domain family which are involved in human cancers in an unusual yin-yang fashion. Two products are normally produced from a PR-domain family member which differ by the presence or absence of the PR domain; the PR-plus product is disrupted or underexpressed whereas the PR-minus product is present or overexpressed in cancer cells. This imbalance in the amount of the two products, a result of either genetic or epigenetic events, appears to be an important cause of malignancy. PRDM12 may have a potential role in the pathogenesis of chronic myeloid leukaemia with derivative chromosome 9 deletion.

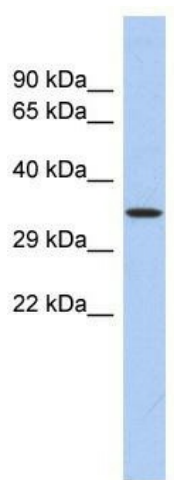


[View online »](#)

**Synonyms:** HSAN8; PFM9

**Note:** Immunogen sequence homology: Pig: 100%; Human: 100%; Bovine: 100%; Rat: 92%; Mouse: 92%; Guinea pig: 92%; Dog: 91%; Zebrafish: 83%

**Product images:**



WB Suggested Anti-PRDM12 Antibody Titration:  
0.2-1 ug/ml; ELISA Titer: 1: 62500; Positive  
Control: Human Thymus