

## Product datasheet for **TA331787**

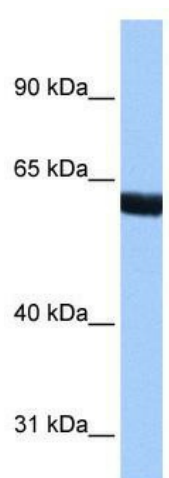
### ZNF350 Rabbit Polyclonal Antibody

#### Product data:

Product Type:	Primary Antibodies
Applications:	WB
Recommended Dilution:	WB
Reactivity:	Human
Host:	Rabbit
Isotype:	IgG
Clonality:	Polyclonal
Immunogen:	The immunogen for Anti-ZNF350 Antibody: synthetic peptide directed towards the N terminal of human ZNF350. Synthetic peptide located within the following region: AFENIVHCSKSQFLLGQNHDIFDLRGKSLKSNLTLVNQSKGYEIKNSVEF
Formulation:	Liquid. Purified antibody supplied in 1x PBS buffer with 0.09% (w/v) sodium azide and 2% sucrose. <i>Note that this product is shipped as lyophilized powder to China customers.</i>
Conjugation:	Unconjugated
Storage:	Store at -20°C as received.
Stability:	Stable for 12 months from date of receipt.
Predicted Protein Size:	60 kDa
Gene Name:	zinc finger protein 350
Database Link:	<a href="#">NP_067645</a> <a href="#">Entrez Gene 59348 Human Q9GZX5</a>
Background:	ZNF350 belongs to the krueppel C2H2-type zinc-finger protein family. It contains 8 C2H2-type zinc fingers and 1 KRAB domain. ZNF350 is a transcriptional repressor. It binds to a specific sequence, 5'-GGGxxxCAGxxxTTT-3', within GADD45 intron 3.
Synonyms:	ZBRK1; ZFQR
Note:	Immunogen sequence homology: Human: 100%; Horse: 86%; Dog: 85%
Protein Families:	Transcription Factors



[View online »](#)

**Product images:**

WB Suggested Anti-ZNF350 Antibody Titration:  
0.2-1 ug/ml; Positive Control: Human brain