

Product datasheet for **TA331786**

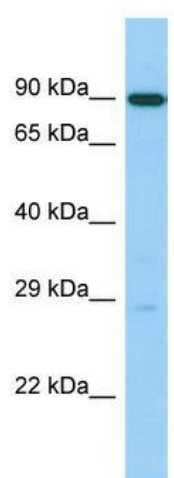
UTP14C Rabbit Polyclonal Antibody

Product data:

Product Type:	Primary Antibodies
Applications:	WB
Recommended Dilution:	WB
Reactivity:	Human
Host:	Rabbit
Isotype:	IgG
Clonality:	Polyclonal
Immunogen:	The immunogen for Anti-UTP14C Antibody is: synthetic peptide directed towards the C-terminal region of Human UTP14C. Synthetic peptide located within the following region: EAFAGDDVIRDFLKEKREAVEASKPKDVDLTPGWGEWGGVGLKPSAKKR
Formulation:	Liquid. Purified antibody supplied in 1x PBS buffer with 0.09% (w/v) sodium azide and 2% sucrose. <i>Note that this product is shipped as lyophilized powder to China customers.</i>
Conjugation:	Unconjugated
Storage:	Store at -20°C as received.
Stability:	Stable for 12 months from date of receipt.
Predicted Protein Size:	84 kDa
Gene Name:	UTP14, small subunit processome component homolog C (<i>S. cerevisiae</i>)
Database Link:	NP_067677 Entrez Gene 9724 Human Q5TAP6
Background:	UTP14C is essential for spermatogenesis. It may be required specifically for ribosome biogenesis and hence protein synthesis during male meiosis
Synonyms:	2700066J21Rik; KIAA0266; UTP14B
Note:	Immunogen sequence homology: Dog: 100%; Pig: 100%; Horse: 100%; Human: 100%; Bovine: 100%; Rabbit: 100%; Rat: 93%; Guinea pig: 86%; Mouse: 77%



[View online »](#)

Product images:

Host: Rabbit; Target Name: UTP14C; Sample Tissue: 721_B Whole Cell lysates; Antibody Dilution: 1.0ug/ml; UTP14C is strongly supported by BioGPS gene expression data to be expressed in Human 721_B cells