

Product datasheet for **TA331784**

BACH2 Rabbit Polyclonal Antibody

Product data:

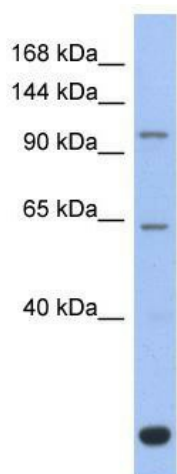
| | |
|--------------------------------|---|
| Product Type: | Primary Antibodies |
| Applications: | WB |
| Recommended Dilution: | WB |
| Reactivity: | Human |
| Host: | Rabbit |
| Isotype: | IgG |
| Clonality: | Polyclonal |
| Immunogen: | The immunogen for Anti-BACH2 Antibody: synthetic peptide directed towards the middle region of human BACH2. Synthetic peptide located within the following region: TSGRRLEGTDPGTFSEKPPLEPRSQTVTVDFCQEMTDKCTTDEQPRKDY |
| Formulation: | Liquid. Purified antibody supplied in 1x PBS buffer with 0.09% (w/v) sodium azide and 2% sucrose. <i>Note that this product is shipped as lyophilized powder to China customers.</i> |
| Purification: | Affinity Purified |
| Conjugation: | Unconjugated |
| Storage: | Store at -20°C as received. |
| Stability: | Stable for 12 months from date of receipt. |
| Predicted Protein Size: | 92 kDa |
| Gene Name: | BTB domain and CNC homolog 2 |
| Database Link: | NP_068585 Entrez Gene 60468 Human Q9BYV9 |
| Background: | BACH2 belongs to the bZIP family. It is a transcriptional regulator that acts as repressor or activator. The protein binds to Maf recognition elements (MARE) and play important roles in coordinating transcription activation and repression by MAFK. |
| Synonyms: | BTBD25 |
| Note: | Immunogen sequence homology: Pig: 100%; Rat: 100%; Horse: 100%; Human: 100%; Bovine: 100%; Rabbit: 100%; Guinea pig: 100%; Mouse: 93%; Dog: 85% |



[View online »](#)

Protein Families: Druggable Genome, Transcription Factors

Product images:



WB Suggested Anti-BACH2 Antibody Titration:
0.2-1 ug/ml; ELISA Titer: 1: 312500; Positive
Control: Human Thymus