

## Product datasheet for **TA331783**

### ALX4 Rabbit Polyclonal Antibody

#### Product data:

Product Type:	Primary Antibodies
Applications:	WB
Recommended Dilution:	WB
Reactivity:	Human
Host:	Rabbit
Isotype:	IgG
Clonality:	Polyclonal
Immunogen:	The immunogen for Anti-ALX4 Antibody: synthetic peptide directed towards the N terminal of human ALX4. Synthetic peptide located within the following region: MNAETCVSYCESPAAAMDAYYSPVSQSREGSSPFRAFPGGDKFGTTFLSA
Formulation:	Liquid. Purified antibody supplied in 1x PBS buffer with 0.09% (w/v) sodium azide and 2% sucrose. <i>Note that this product is shipped as lyophilized powder to China customers.</i>
Conjugation:	Unconjugated
Storage:	Store at -20°C as received.
Stability:	Stable for 12 months from date of receipt.
Predicted Protein Size:	44 kDa
Gene Name:	ALX homeobox 4
Database Link:	<a href="#">NP_068745</a> <a href="#">Entrez Gene 60529 Human Q9H161</a>
Background:	Alx4 is a member of the family of transcription factors that contain the paired-type homeodomain. In contrast to other types of homeodomains, the paired-type homeodomain has been shown to mediate high-affinity sequence-specific DNA binding to palindromic elements as either homodimers or as heterodimers with other family members. Alx4 is co-expressed with Cart1 at several sites during development, including the craniofacial mesenchyme, the mesenchymal derivatives of neural crest cells in the first branchial arch and the limb bud mesenchyme.



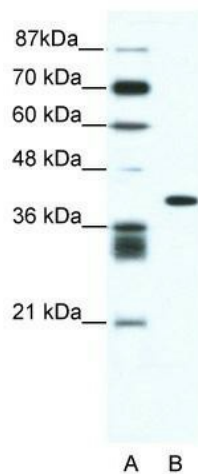
[View online »](#)

**Synonyms:** CRS5; FND2

**Note:** Immunogen sequence homology: Human: 100%; Dog: 93%; Pig: 93%; Rat: 93%; Mouse: 93%; Bovine: 93%; Rabbit: 93%; Guinea pig: 93%

**Protein Families:** Druggable Genome

**Product images:**



WB Suggested Anti-ALX4 Antibody Titration: 0.2-1 ug/ml; ELISA Titer: 1: 12500; Positive Control: Jurkat cell lysate