

## Product datasheet for **TA331782**

### ALX4 Rabbit Polyclonal Antibody

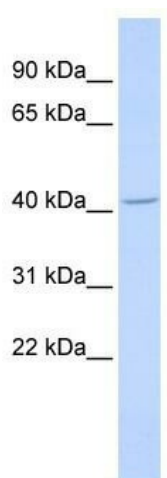
#### Product data:

Product Type:	Primary Antibodies
Applications:	WB
Recommended Dilution:	WB
Reactivity:	Human
Host:	Rabbit
Isotype:	IgG
Clonality:	Polyclonal
Immunogen:	The immunogen for Anti-ALX4 Antibody: synthetic peptide directed towards the middle region of human ALX4. Synthetic peptide located within the following region: GQTHMGSFLGAASLSPGLNGYELNGEPDRKTSSIAALRMKAKEHSAAISW
Formulation:	Liquid. Purified antibody supplied in 1x PBS buffer with 0.09% (w/v) sodium azide and 2% sucrose. <i>Note that this product is shipped as lyophilized powder to China customers.</i>
Conjugation:	Unconjugated
Storage:	Store at -20°C as received.
Stability:	Stable for 12 months from date of receipt.
Predicted Protein Size:	44 kDa
Gene Name:	ALX homeobox 4
Database Link:	<a href="#">NP_068745</a> <a href="#">Entrez Gene 60529 Human</a> <a href="#">Q9H161</a>
Background:	ALX4 is a member of the ALX homeobox gene family in humans. The paired-type homeodomain has been shown to mediate high-affinity sequence-specific DNA binding to palindromic elements as either homodimers or as heterodimers with other family members.
Synonyms:	CRS5; FND2
Note:	Immunogen sequence homology: Dog: 100%; Pig: 100%; Rat: 100%; Horse: 100%; Human: 100%; Bovine: 100%; Rabbit: 100%; Guinea pig: 100%; Mouse: 92%
Protein Families:	Druggable Genome



[View online »](#)

## Product images:



WB Suggested Anti-ALX4 Antibody Titration: 0.2-1 ug/ml; ELISA Titer: 1: 12500; Positive Control: Human Muscle