

Product datasheet for **TA331780**

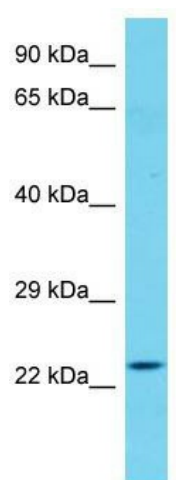
STEEP1 Rabbit Polyclonal Antibody

Product data:

Product Type:	Primary Antibodies
Applications:	WB
Recommended Dilution:	WB
Reactivity:	Human
Host:	Rabbit
Isotype:	IgG
Clonality:	Polyclonal
Immunogen:	The immunogen for Anti-CXorf56 Antibody is: synthetic peptide directed towards the C-terminal region of Human CXorf56. Synthetic peptide located within the following region: VTVSTIDEEEEIEAREVADSYAQNAKVIEKQLERKGM SKRRLQELAELE
Formulation:	Liquid. Purified antibody supplied in 1x PBS buffer with 0.09% (w/v) sodium azide and 2% sucrose.
Conjugation:	Unconjugated
Storage:	Store at -20°C as received.
Stability:	Stable for 12 months from date of receipt.
Predicted Protein Size:	24 kDa
Gene Name:	chromosome X open reading frame 56
Database Link:	NP_071384 Entrez Gene 63932 Human Q9H5V9
Background:	While this gene is well-supported by transcript data, no functional information on its protein products is currently available. Three transcript variants encoding different isoforms have been found for this gene.
Synonyms:	FLJ22965
Note:	Immunogen sequence homology: Dog: 100%; Pig: 100%; Rat: 100%; Horse: 100%; Human: 100%; Mouse: 100%; Bovine: 100%; Rabbit: 100%; Zebrafish: 100%; Guinea pig: 100%



[View online »](#)

Product images:

Host: Rabbit; Target Name: CXorf56; Sample
Tissue: Fetal Heart lysates; Antibody Dilution:
1.0ug/ml