

Product datasheet for **TA331778**

MMP27 Rabbit Polyclonal Antibody

Product data:

Product Type:	Primary Antibodies
Applications:	WB
Recommended Dilution:	WB
Reactivity:	Human
Host:	Rabbit
Isotype:	IgG
Clonality:	Polyclonal
Immunogen:	The immunogen for Anti-MMP27 Antibody is: synthetic peptide directed towards the middle region of Human MMP27. Synthetic peptide located within the following region: GDTHFDEDENWTKDGAGFNLFVAAHEFGHALGLSHSNDQ TALMFPNYVS
Formulation:	Liquid. Purified antibody supplied in 1x PBS buffer with 0.09% (w/v) sodium azide and 2% sucrose. <i>Note that this product is shipped as lyophilized powder to China customers.</i>
Conjugation:	Unconjugated
Storage:	Store at -20°C as received.
Stability:	Stable for 12 months from date of receipt.
Predicted Protein Size:	59 kDa
Gene Name:	matrix metalloproteinase 27
Database Link:	NP_071405 Entrez Gene 64066 Human Q9H306
Background:	Proteins of the matrix metalloproteinase (MMP) family are involved in the breakdown of extracellular matrix in normal physiological processes, such as embryonic development, reproduction, and tissue remodeling, as well as in disease processes, such as arthritis and metastasis. Most MMP's are secreted as inactive proproteins which are activated when cleaved by extracellular proteinases.
Synonyms:	MMP-27

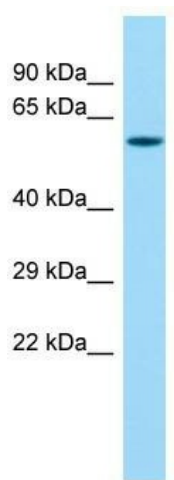


[View online »](#)

Note: Immunogen sequence homology: Pig: 100%; Rat: 100%; Horse: 100%; Human: 100%; Bovine: 100%; Rabbit: 100%; Dog: 93%; Zebrafish: 86%; Mouse: 80%

Protein Families: Druggable Genome

Product images:



Host: Rabbit; Target Name: MMP27; Sample Tissue: Fetal Lung lysates; Antibody Dilution: 1.0ug/ml