

## Product datasheet for **TA331777**

### DMRTA1 Rabbit Polyclonal Antibody

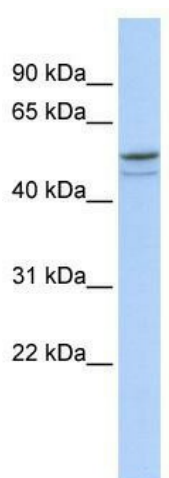
#### Product data:

Product Type:	Primary Antibodies
Applications:	WB
Recommended Dilution:	WB
Reactivity:	Human
Host:	Rabbit
Isotype:	IgG
Clonality:	Polyclonal
Immunogen:	The immunogen for Anti-DMRTA1 Antibody: synthetic peptide directed towards the middle region of human DMRTA1. Synthetic peptide located within the following region: AENPQSTGGPAAGAALGLGALRQASGSATPAFEVFQQDYPEEKQEQESK
Formulation:	Liquid. Purified antibody supplied in 1x PBS buffer with 0.09% (w/v) sodium azide and 2% sucrose.
Conjugation:	Unconjugated
Storage:	Store at -20°C as received.
Stability:	Stable for 12 months from date of receipt.
Predicted Protein Size:	53 kDa
Gene Name:	DMRT like family A1
Database Link:	<a href="#">NP_071443</a> <a href="#">Entrez Gene 63951 Human</a> <a href="#">Q5VZB9</a>
Background:	DMRTA1 may be involved in sexual development.
Synonyms:	DMO; DMRT4
Note:	Immunogen sequence homology: Human: 100%; Horse: 92%; Rat: 86%; Bovine: 85%; Rabbit: 79%



[View online »](#)

## Product images:



WB Suggested Anti-DMRTA1 Antibody Titration:  
0.2-1 ug/ml; ELISA Titer: 1: 12500; Positive  
Control: Hela cell lysate