

Product datasheet for **TA331776**

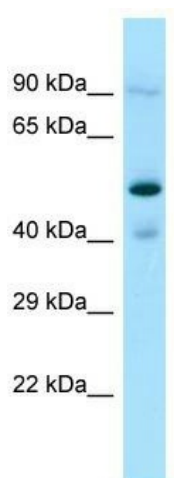
OSGEPL1 Rabbit Polyclonal Antibody

Product data:

Product Type:	Primary Antibodies
Applications:	WB
Recommended Dilution:	WB
Reactivity:	Human
Host:	Rabbit
Isotype:	IgG
Clonality:	Polyclonal
Immunogen:	The immunogen for Anti-OSGEPL1 Antibody is: synthetic peptide directed towards the C-terminal region of Human OSGEPL1. Synthetic peptide located within the following region: IMIAWNGIERLRAGLGILHDIEGIRYEPKCPLGVDISKEVGEASIKVPQL
Formulation:	Liquid. Purified antibody supplied in 1x PBS buffer with 0.09% (w/v) sodium azide and 2% sucrose.
Conjugation:	Unconjugated
Storage:	Store at -20°C as received.
Stability:	Stable for 12 months from date of receipt.
Predicted Protein Size:	45 kDa
Gene Name:	O-sialoglycoprotein endopeptidase-like 1
Database Link:	NP_071748 Entrez Gene 64172 Human Q9H4B0
Background:	OSGEPL1 is required for the formation of a threonylcarbamoyl group on adenosine at position 37 (t6A37) in tRNAs that read codons beginning with adenine.
Synonyms:	OSGEPL; Qri7
Note:	Immunogen sequence homology: Horse: 100%; Human: 100%; Bovine: 100%; Dog: 92%; Pig: 92%; Rabbit: 92%; Guinea pig: 91%; Mouse: 85%; Rat: 77%
Protein Families:	Druggable Genome, Protease



[View online »](#)

Product images:

Host: Rabbit; Target Name: OSGEPL1; Sample
Tissue: Jurkat Whole Cell lysates; Antibody
Dilution: 1.0ug/ml