

## Product datasheet for **TA331775**

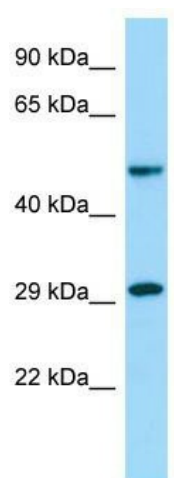
### OSGEPL1 Rabbit Polyclonal Antibody

#### Product data:

Product Type:	Primary Antibodies
Applications:	WB
Recommended Dilution:	WB
Reactivity:	Human
Host:	Rabbit
Isotype:	IgG
Clonality:	Polyclonal
Immunogen:	The immunogen for Anti-OSGEPL1 Antibody is: synthetic peptide directed towards the C-terminal region of Human OSGEPL1. Synthetic peptide located within the following region: IKPPLHHAKNCDIFSFTGLQHVTDKIIMKKEKEEGIEKGQILSSAADIAAT
Formulation:	Liquid. Purified antibody supplied in 1x PBS buffer with 0.09% (w/v) sodium azide and 2% sucrose. <i>Note that this product is shipped as lyophilized powder to China customers.</i>
Conjugation:	Unconjugated
Storage:	Store at -20°C as received.
Stability:	Stable for 12 months from date of receipt.
Predicted Protein Size:	48 kDa
Gene Name:	O-sialoglycoprotein endopeptidase-like 1
Database Link:	<a href="#">NP_071748</a> <a href="#">Entrez Gene 64172 Human Q9H4B0</a>
Background:	OSGEPL1 is required for the formation of a threonylcarbonyl group on adenosine at position 37 (t6A37) in tRNAs that read codons beginning with adenine.
Synonyms:	OSGEPL; Qri7
Note:	Immunogen sequence homology: Rat: 100%; Human: 100%; Mouse: 100%; Rabbit: 100%; Pig: 93%; Dog: 92%; Zebrafish: 83%; Guinea pig: 83%; Bovine: 79%
Protein Families:	Druggable Genome, Protease



[View online »](#)

**Product images:**

Host: Rabbit; Target Name: OSGEPL1; Sample  
Tissue: MCF7 Whole Cell lysates; Antibody  
Dilution: 1.0ug/ml