

Product datasheet for **TA331774**

LHX5 Rabbit Polyclonal Antibody

Product data:

Product Type:	Primary Antibodies
Applications:	IHC, WB
Recommended Dilution:	IHC, WB
Reactivity:	Human, Mouse
Host:	Rabbit
Isotype:	IgG
Clonality:	Polyclonal
Immunogen:	The immunogen for Anti-LHX5 Antibody: synthetic peptide directed towards the middle region of human LHX5. Synthetic peptide located within the following region: FFRSPRRMRPLGGRLDESEMLGSTPYTYGDYQGDYYAPGSNYDFFAHGP
Formulation:	Liquid. Purified antibody supplied in 1x PBS buffer with 0.09% (w/v) sodium azide and 2% sucrose.
Conjugation:	Unconjugated
Storage:	Store at -20°C as received.
Stability:	Stable for 12 months from date of receipt.
Predicted Protein Size:	44 kDa
Gene Name:	LIM homeobox 5
Database Link:	NP_071758 Entrez Gene 16873 Mouse Entrez Gene 64211 Human Q9H2C1
Background:	LHX5 plays an essential role in the regulation of neuronal differentiation and migration during development of the central nervous system. This gene encodes a protein belonging to a large protein family, members of which carry the LIM domain, a unique cysteine-rich zinc-binding domain. The encoded protein may function as a transcriptional regulator and be involved in the control of differentiation and development of the forebrain. In mice, this protein is essential for the regulation of precursor cell proliferation and the control of neuronal differentiation and migration during hippocampal development. This protein is involved in learning and motor functions in adult mice.



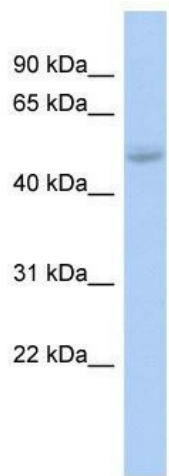
[View online »](#)

Synonyms: MGC129689

Note: Immunogen sequence homology: Dog: 100%; Pig: 100%; Rat: 100%; Horse: 100%; Human: 100%; Bovine: 100%; Rabbit: 100%; Guinea pig: 100%; Mouse: 93%; Zebrafish: 83%

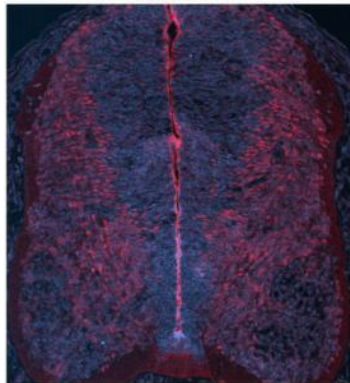
Protein Families: Druggable Genome

Product images:



WB Suggested Anti-LHX5 Antibody Titration: 0.2-1 ug/ml; ELISA Titer: 1: 62500; Positive Control: COLO205 cell lysate LHX5 is supported by BioGPS gene expression data to be expressed in COLO205

Lhx5



Red: Lhx5 Cyan: Nissl(Neurons)

See IHC 1 Data and Customer Feedback for more Information.

Sample Type: Embryonic mouse spinal cord
 Primary Antibody Dilution: 1: 500; Secondary Antibody: Anti-rabbit-Cy3; Secondary Antibody dilution: 1: 1000; Color/Signal Descriptions: Red: Lhx5 Cyan: Nissl (Neurons); Gene Name: LHX5; Submitted by: Joshua R. S