

Product datasheet for TA331772

TOR3A Rabbit Polyclonal Antibody

Product data:

Product Type:	Primary Antibodies
Applications:	WB
Recommended Dilution:	WB
Reactivity:	Human
Host:	Rabbit
Isotype:	IgG
Clonality:	Polyclonal
Immunogen:	The immunogen for Anti-TOR3A Antibody: synthetic peptide directed towards the middle region of human TOR3A. Synthetic peptide located within the following region: FHFPHPKYVDLYKEQLMSQIRETQQLCHQTLFIFDEAEKLPGLLEVLGP
Formulation:	Liquid. Purified antibody supplied in 1x PBS buffer with 0.09% (w/v) sodium azide and 2% sucrose. <i>Note that this product is shipped as lyophilized powder to China customers.</i>
Conjugation:	Unconjugated
Storage:	Store at -20°C as received.
Stability:	Stable for 12 months from date of receipt.
Predicted Protein Size:	46 kDa
Gene Name:	torsin family 3 member A
Database Link:	NP_071766 Entrez Gene 64222 Human Q9H497
Background:	The function remains unknown.
Synonyms:	ADIR; ADIR2
Note:	Immunogen sequence homology: Dog: 100%; Human: 100%; Pig: 93%; Rat: 93%; Horse: 93%; Mouse: 93%; Bovine: 93%; Rabbit: 86%; Guinea pig: 86%; Zebrafish: 83%

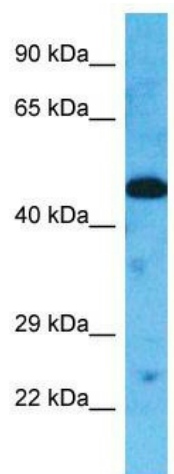


[View online »](#)

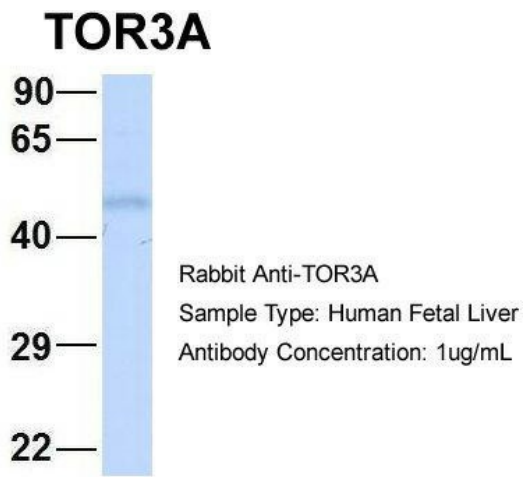
Product images:



WB Suggested Anti-TOR3A Antibody Titration:
0.2-1 ug/ml; Positive Control: Transfected 293T



Host: Rabbit; Target Name: TOR3A; Sample
Tissue: HepG2 Whole cell lysates; Antibody
Dilution: 1.0ug/ml



3Hum. Fetal Liver; Host: Rabbit; Target Name: FAM46C; Sample Tissue: Human Fetal Liver; Antibody Dilution: 1.0ug/ml