

Product datasheet for **TA331771**

ABCG5 Rabbit Polyclonal Antibody

Product data:

Product Type:	Primary Antibodies
Applications:	WB
Recommended Dilution:	WB
Reactivity:	Human
Host:	Rabbit
Isotype:	IgG
Clonality:	Polyclonal
Immunogen:	The immunogen for Anti-ABCG5 Antibody: synthetic peptide directed towards the middle region of human ABCG5. Synthetic peptide located within the following region: CGYPCPEHSNPFDFYMDLTSVDTQSKEREIETSKRVQMIESAYKKSACH
Formulation:	Liquid. Purified antibody supplied in 1x PBS buffer with 0.09% (w/v) sodium azide and 2% sucrose. <i>Note that this product is shipped as lyophilized powder to China customers.</i>
Conjugation:	Unconjugated
Storage:	Store at -20°C as received.
Stability:	Stable for 12 months from date of receipt.
Predicted Protein Size:	72 kDa
Gene Name:	ATP binding cassette subfamily G member 5
Database Link:	NP_071881 Entrez Gene 64240 Human Q9H222



[View online »](#)

Background:

The protein encoded by this gene is a member of the superfamily of ATP-binding cassette (ABC) transporters. ABC proteins transport various molecules across extra- and intra-cellular membranes. ABC genes are divided into seven distinct subfamilies (ABC1, MDR/TAP, MRP, ALD, OABP, GCN20, White). This protein is a member of the White subfamily. The protein encoded by this gene functions as a half-transporter to limit intestinal absorption and promote biliary excretion of sterols. It is expressed in a tissue-specific manner in the liver, colon, and intestine. This gene is tandemly arrayed on chromosome 2, in a head-to-head orientation with family member ABCG8. Mutations in this gene may contribute to sterol accumulation and atherosclerosis, and have been observed in patients with sitosterolemia.

Synonyms:

STSL

Note:

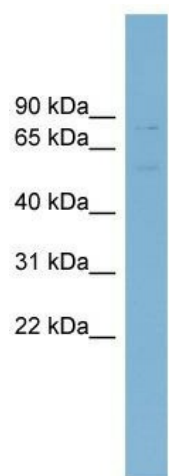
Immunogen sequence homology: Pig: 100%; Human: 100%; Guinea pig: 100%; Horse: 93%; Dog: 86%; Rat: 86%; Mouse: 86%; Bovine: 86%; Rabbit: 86%

Protein Families:

Druggable Genome, Transmembrane

Protein Pathways:

ABC transporters

Product images:

WB Suggested Anti-ABCG5 Antibody Titration:
0.2-1 ug/ml; ELISA Titer: 1: 62500; Positive
Control: Human Spleen