

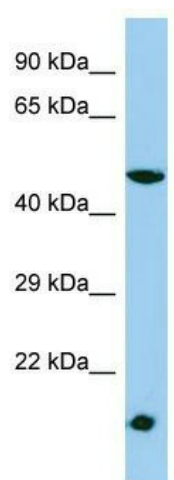
## Product datasheet for **TA331769**

### TLNRD1 Rabbit Polyclonal Antibody

#### Product data:

Product Type:	Primary Antibodies
Applications:	WB
Recommended Dilution:	WB
Reactivity:	Human
Host:	Rabbit
Isotype:	IgG
Clonality:	Polyclonal
Immunogen:	The immunogen for Anti-MESDC1 Antibody is: synthetic peptide directed towards the N-terminal region of Human MESDC1. Synthetic peptide located within the following region: AIGGASSQPRKRLVSVC DHCKGKMQLVADLLLLSSEARPVLFEGPASSGA
Formulation:	Liquid. Purified antibody supplied in 1x PBS buffer with 0.09% (w/v) sodium azide and 2% sucrose.
Conjugation:	Unconjugated
Storage:	Store at -20°C as received.
Stability:	Stable for 12 months from date of receipt.
Predicted Protein Size:	40 kDa
Gene Name:	mesoderm development candidate 1
Database Link:	<a href="#">NP_072088</a> <a href="#">Entrez Gene 59274 Human</a> <a href="#">Q9H1K6</a>
Background:	The function of this protein remains unknown.
Synonyms:	MGC99595
Note:	Immunogen sequence homology: Human: 100%; Rat: 93%; Horse: 93%; Mouse: 93%; Bovine: 93%; Dog: 79%


[View online »](#)

**Product images:**

Host: Rabbit; Target Name: MESDC1; Sample  
Tissue: HepG2 Whole Cell lysates; Antibody  
Dilution: 1.0ug/ml