

Product datasheet for **TA331768**

EBF2 Rabbit Polyclonal Antibody

Product data:

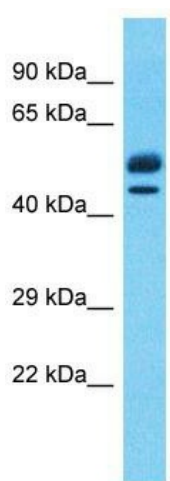
Product Type:	Primary Antibodies
Applications:	WB
Recommended Dilution:	WB
Reactivity:	Human
Host:	Rabbit
Isotype:	IgG
Clonality:	Polyclonal
Immunogen:	The immunogen for Anti-EBF2 Antibody is: synthetic peptide directed towards the C-terminal region of Human EBF2. Synthetic peptide located within the following region: DIAEALYSVPRNPSQLPALSSSPAHSMMGINSYGSQLGVSISESTQGNN
Formulation:	Liquid. Purified antibody supplied in 1x PBS buffer with 0.09% (w/v) sodium azide and 2% sucrose. <i>Note that this product is shipped as lyophilized powder to China customers.</i>
Purification:	Affinity Purified
Conjugation:	Unconjugated
Storage:	Store at -20°C as received.
Stability:	Stable for 12 months from date of receipt.
Predicted Protein Size:	46 kDa
Gene Name:	early B-cell factor 2
Database Link:	NP_073150 Entrez Gene 64641 Human Q9HAK2
Background:	The protein encoded by this gene belongs to the COE (Collier/Olf/EBF) family of non-basic, helix-loop-helix transcription factors that have a well conserved DNA binding domain. The COE family proteins play an important role in variety of developmental processes. Studies in mouse suggest that this gene may be involved in the differentiation of osteoblasts.
Synonyms:	COE2; E-3; EBF-2; O; OE-3



[View online »](#)

Note: Immunogen sequence homology: Dog: 100%; Pig: 100%; Rat: 100%; Horse: 100%; Human: 100%; Mouse: 100%; Bovine: 100%; Guinea pig: 100%; Rabbit: 92%; Zebrafish: 86%

Product images:



Host: Rabbit
Target Name: EBF2
Sample Tissue: Thymus Tumor Lysate
Antibody Dilution: 1.0 μ g/ml

Host: Rabbit; Target Name: EBF2; Sample Tissue:
Thymus Tumor lysates; Antibody Dilution:
1.0ug/ml