

Product datasheet for TA331767

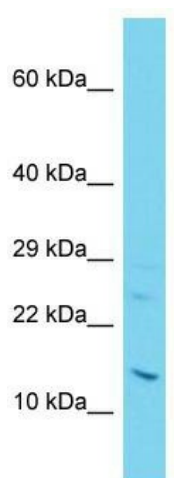
C11orf1 Rabbit Polyclonal Antibody

Product data:

Product Type:	Primary Antibodies
Applications:	WB
Recommended Dilution:	WB
Reactivity:	Human
Host:	Rabbit
Isotype:	IgG
Clonality:	Polyclonal
Immunogen:	The immunogen for Anti-C11orf1 Antibody is: synthetic peptide directed towards the C-terminal region of Human C11orf1. Synthetic peptide located within the following region: TYDTSYNNKMPLSTHRFKREPHWFPGHQPELDPPRYKCTEKSTYMNSYSK
Formulation:	Liquid. Purified antibody supplied in 1x PBS buffer with 0.09% (w/v) sodium azide and 2% sucrose. <i>Note that this product is shipped as lyophilized powder to China customers.</i>
Conjugation:	Unconjugated
Storage:	Store at -20°C as received.
Stability:	Stable for 12 months from date of receipt.
Predicted Protein Size:	17 kDa
Gene Name:	chromosome 11 open reading frame 1
Database Link:	NP_073598 Entrez Gene 64776 Human Q9H5F2
Background:	The function of this protein remains unknown.
Synonyms:	FLJ23499
Note:	Immunogen sequence homology: Human: 100%; Pig: 93%; Rat: 93%; Horse: 93%; Bovine: 93%; Rabbit: 93%; Dog: 85%; Guinea pig: 79%; Mouse: 77%



[View online »](#)

Product images:

Host: Rabbit; Target Name: C11orf1; Sample
Tissue: Jurkat Whole Cell lysates; Antibody
Dilution: 1.0ug/ml