

Product datasheet for **TA331766**

RMND5B Rabbit Polyclonal Antibody

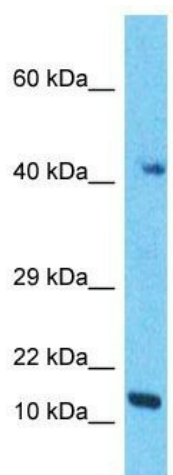
Product data:

Product Type:	Primary Antibodies
Applications:	WB
Recommended Dilution:	WB
Reactivity:	Human
Host:	Rabbit
Isotype:	IgG
Clonality:	Polyclonal
Immunogen:	The immunogen for Anti-RMND5B Antibody is: synthetic peptide directed towards the N-terminal region of Human RMND5B. Synthetic peptide located within the following region: ELDKVLQKFLTYGQHCCERSLEELLHYVGQLRAELASAALQGTPLSATLSL
Formulation:	Liquid. Purified antibody supplied in 1x PBS buffer with 0.09% (w/v) sodium azide and 2% sucrose. <i>Note that this product is shipped as lyophilized powder to China customers.</i>
Conjugation:	Unconjugated
Storage:	Store at -20°C as received.
Stability:	Stable for 12 months from date of receipt.
Predicted Protein Size:	43 kDa
Gene Name:	required for meiotic nuclear division 5 homolog B
Database Link:	NP_073599 Entrez Gene 64777 Human Q96G75
Background:	The function of this protein remains unknown.
Synonyms:	GID2; GID2B
Note:	Immunogen sequence homology: Rat: 100%; Human: 100%; Dog: 93%; Pig: 93%; Horse: 93%; Bovine: 93%; Rabbit: 93%; Guinea pig: 93%; Mouse: 86%
Protein Families:	Stem cell - Pluripotency



[View online »](#)

Product images:



Host: Rabbit

Target Name: RMND5B

Sample Tissue: A549 Cell Lysate

Antibody Dilution: 1.0µg/ml

Host: Rabbit; Target Name: RMND5B; Sample
Tissue: A549 Whole Cell lysates; Antibody
Dilution: 1.0ug/ml