

## Product datasheet for **TA331765**

### GPBP1 Rabbit Polyclonal Antibody

#### Product data:

Product Type:	Primary Antibodies
Applications:	IHC, WB
Recommended Dilution:	WB, IHC
Reactivity:	Human
Host:	Rabbit
Isotype:	IgG
Clonality:	Polyclonal
Immunogen:	The immunogen for Anti-DKFZP761C169 Antibody: synthetic peptide directed towards the N terminal of human DKFZP761C169. Synthetic peptide located within the following region: RKEKNGWRTHGRNGTENINHRGGYHGGSSRSRSSFHAGKSQGLHENNIP
Formulation:	Liquid. Purified antibody supplied in 1x PBS buffer with 0.09% (w/v) sodium azide and 2% sucrose.
Conjugation:	Unconjugated
Storage:	Store at -20°C as received.
Stability:	Stable for 12 months from date of receipt.
Predicted Protein Size:	52 kDa
Gene Name:	GC-rich promoter binding protein 1
Database Link:	<a href="#">NP_075064</a> <a href="#">Entrez Gene 65056 Human</a> <a href="#">Q86WP2</a>
Background:	Vasculin is a novel vascular protein differentially expressed in human atherogenesis
Synonyms:	GPBP; SSH6; VASCULIN
Note:	Immunogen sequence homology: Human: 100%; Dog: 93%; Pig: 93%; Rat: 93%; Horse: 93%; Mouse: 93%; Bovine: 93%; Guinea pig: 93%; Rabbit: 86%

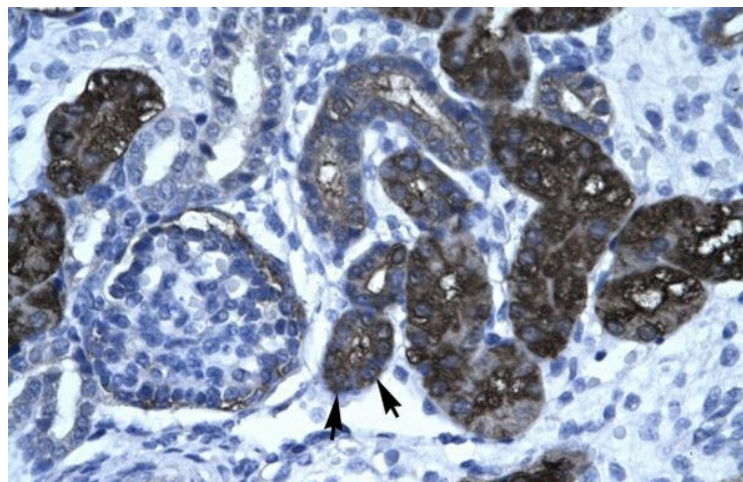


[View online »](#)

## Product images:



WB Suggested Anti-DKFZP761C169 Antibody  
Titration: 0.2-1 ug/ml; Positive Control: HepG2 cell  
lysate



Human kidney