

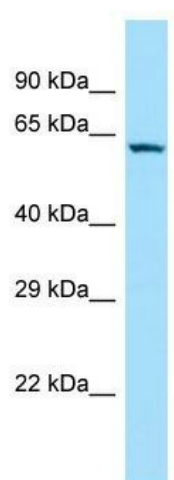
## Product datasheet for **TA331763**

### ANKRD57 (SOWAHC) Rabbit Polyclonal Antibody

#### Product data:

Product Type:	Primary Antibodies
Applications:	WB
Recommended Dilution:	WB
Reactivity:	Human
Host:	Rabbit
Isotype:	IgG
Clonality:	Polyclonal
Immunogen:	The immunogen for Anti-SOWAHC Antibody is: synthetic peptide directed towards the N-terminal region of Human SOWAHC. Synthetic peptide located within the following region: PGQGRELGEPEPPAPAHWPPLSAGARRKNSRRDVQPLRTPAPGPSEDLE
Formulation:	Liquid. Purified antibody supplied in 1x PBS buffer with 0.09% (w/v) sodium azide and 2% sucrose.
Conjugation:	Unconjugated
Storage:	Store at -20°C as received.
Stability:	Stable for 12 months from date of receipt.
Predicted Protein Size:	58 kDa
Gene Name:	so sondowah ankyrin repeat domain family member C
Database Link:	<a href="#">NP_075392</a> <a href="#">Entrez Gene 65124 Human</a> <a href="#">Q53LP3</a>
Background:	The function of this protein remains unknown.
Synonyms:	ANKRD57; C2orf26
Note:	Immunogen sequence homology: Human: 100%; Rabbit: 93%

[View online »](#)

**Product images:**


WB Suggested Anti-SOWAHC Antibody; Titration:  
1.0 ug/ml; Positive Control: Hela Whole cell