

## Product datasheet for **TA331762**

### TAS2R7 Rabbit Polyclonal Antibody

#### Product data:

Product Type:	Primary Antibodies
Applications:	WB
Recommended Dilution:	WB
Reactivity:	Human
Host:	Rabbit
Isotype:	IgG
Clonality:	Polyclonal
Immunogen:	The immunogen for Anti-TAS2R7 Antibody is: synthetic peptide directed towards the middle region of Human TAS2R7. Synthetic peptide located within the following region: DFRFCVKAKRKTNLTWSCRVNKTQHASTKLFLNLATLLPFCVCLMSFFLL
Formulation:	Liquid. Purified antibody supplied in 1x PBS buffer with 0.09% (w/v) sodium azide and 2% sucrose. <i>Note that this product is shipped as lyophilized powder to China customers.</i>
Conjugation:	Unconjugated
Storage:	Store at -20°C as received.
Stability:	Stable for 12 months from date of receipt.
Predicted Protein Size:	35 kDa
Gene Name:	taste 2 receptor member 7
Database Link:	<a href="#">NP_076408</a> <a href="#">Entrez Gene 50837 Human</a> <a href="#">Q9NYW3</a>
Background:	This gene product belongs to the family of candidate taste receptors that are members of the G-protein-coupled receptor superfamily. These proteins are specifically expressed in the taste receptor cells of the tongue and palate epithelia. They are organized in the genome in clusters and are genetically linked to loci that influence bitter perception in mice and humans. In functional expression studies, they respond to bitter tastants. This gene maps to the taste receptor gene cluster on chromosome 12p13.
Synonyms:	T2R7; TRB4



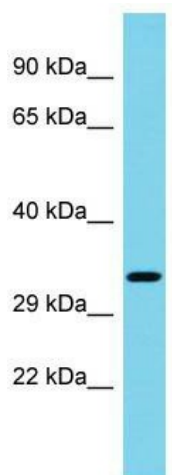
[View online »](#)

**Note:** Immunogen sequence homology: Human: 100%

**Protein Families:** Transmembrane

**Protein Pathways:** Taste transduction

**Product images:**



Host: Rabbit; Target Name: TAS2R7; Sample Tissue: PANC1 Whole Cell lysates; Antibody Dilution: 1.0ug/ml. TAS2R7 is supported by BioGPS gene expression data to be expressed in PANC1