

Product datasheet for TA331760

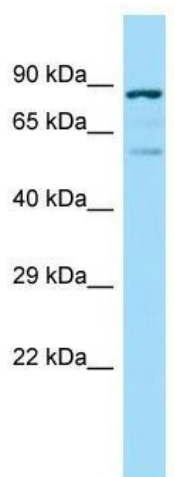
PHACTR4 Rabbit Polyclonal Antibody

Product data:

Product Type:	Primary Antibodies
Applications:	WB
Recommended Dilution:	WB
Reactivity:	Human
Host:	Rabbit
Isotype:	IgG
Clonality:	Polyclonal
Immunogen:	The immunogen for Anti-PHACTR4 Antibody is: synthetic peptide directed towards the C-terminal region of Human PHACTR4. Synthetic peptide located within the following region: HQIGNTLIRRLSQRPTPEELEQRNQLPKNEADRQAEKREIKRRLTRKLS
Formulation:	Liquid. Purified antibody supplied in 1x PBS buffer with 0.09% (w/v) sodium azide and 2% sucrose.
Conjugation:	Unconjugated
Storage:	Store at -20°C as received.
Stability:	Stable for 12 months from date of receipt.
Predicted Protein Size:	79 kDa
Gene Name:	phosphatase and actin regulator 4
Database Link:	NP_076412 Entrez Gene 65979 Human Q8IZ21
Background:	This gene encodes a member of the phosphatase and actin regulator (PHACTR) family. Other PHACTR family members have been shown to inhibit protein phosphatase 1 (PP1) activity, and the homolog of this gene in the mouse has been shown to interact with actin and PP1. Multiple transcript variants encoding different isoforms have been found for this gene.
Synonyms:	PPP1R124
Note:	Immunogen sequence homology: Dog: 100%; Pig: 100%; Rat: 100%; Horse: 100%; Human: 100%; Mouse: 100%; Bovine: 100%; Rabbit: 100%; Guinea pig: 100%; Zebrafish: 93%


[View online »](#)

Product images:



Host: Rabbit; Target Name: PHACTR4; Sample
Tissue: Fetal Lung lysates; Antibody Dilution:
1.0ug/ml