

Product datasheet for **TA331752**

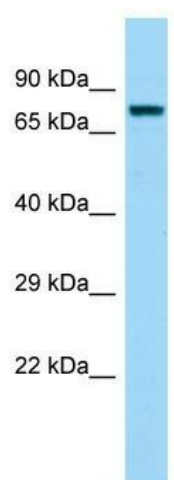
FASTKD3 Rabbit Polyclonal Antibody

Product data:

Product Type:	Primary Antibodies
Applications:	WB
Recommended Dilution:	WB
Reactivity:	Human
Host:	Rabbit
Isotype:	IgG
Clonality:	Polyclonal
Immunogen:	The immunogen for Anti-FASTKD3 Antibody is: synthetic peptide directed towards the N-terminal region of Human FASTKD3. Synthetic peptide located within the following region: HPLGGPVFSQVSDCDRLQNVKNEESQMFYRRLSNLTSSEEVLSFISTME
Formulation:	Liquid. Purified antibody supplied in 1x PBS buffer with 0.09% (w/v) sodium azide and 2% sucrose. <i>Note that this product is shipped as lyophilized powder to China customers.</i>
Conjugation:	Unconjugated
Storage:	Store at -20°C as received.
Stability:	Stable for 12 months from date of receipt.
Predicted Protein Size:	73 kDa
Gene Name:	FAST kinase domains 3
Database Link:	NP_076996 Entrez Gene 79072 Human Q14CZ7
Background:	The function of this protein remains unknown.
Synonyms:	FLJ23274; MGC5297; MGC142123
Note:	Immunogen sequence homology: Human: 100%



[View online »](#)

Product images:


Host: Rabbit; Target Name: FASTKD3; Sample
Tissue: 721_B Whole Cell lysates; Antibody
Dilution: 1.0ug/ml; FASTKD3 is supported by
BioGPS gene expression data to be expressed in
721_B