

Product datasheet for **TA331751**

FASTKD3 Rabbit Polyclonal Antibody

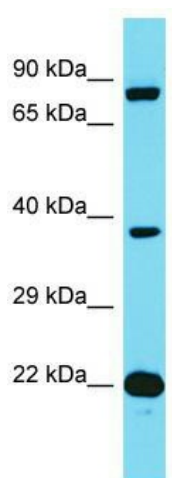
Product data:

| | |
|-------------------------|--|
| Product Type: | Primary Antibodies |
| Applications: | WB |
| Recommended Dilution: | WB |
| Reactivity: | Human |
| Host: | Rabbit |
| Isotype: | IgG |
| Clonality: | Polyclonal |
| Immunogen: | The immunogen for Anti-FASTKD3 Antibody is: synthetic peptide directed towards the N-terminal region of Human FASTKD3. Synthetic peptide located within the following region: TMETLPDTMAAGALQRICEVEKKDGDQGLPKEILENSIFQALCFQFEKEP |
| Formulation: | Liquid. Purified antibody supplied in 1x PBS buffer with 0.09% (w/v) sodium azide and 2% sucrose. <i>Note that this product is shipped as lyophilized powder to China customers.</i> |
| Conjugation: | Unconjugated |
| Storage: | Store at -20°C as received. |
| Stability: | Stable for 12 months from date of receipt. |
| Predicted Protein Size: | 73 kDa |
| Gene Name: | FAST kinase domains 3 |
| Database Link: | NP_076996 Entrez Gene 79072 Human Q14CZ7 |
| Background: | The function of this protein remains unknown. |
| Synonyms: | FLJ23274; MGC5297; MGC142123 |
| Note: | Immunogen sequence homology: Human: 100%; Horse: 86%; Bovine: 86% |



[View online »](#)

Product images:



Host: Rabbit; Target Name: FASTKD3; Sample
Tissue: PANC1 Whole Cell lysates; Antibody
Dilution: 1.0ug/ml