

Product datasheet for **TA331750**

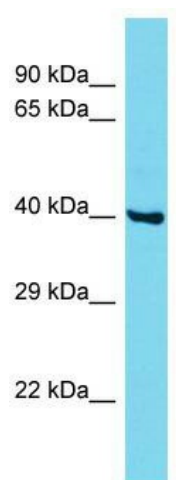
CCDC86 Rabbit Polyclonal Antibody

Product data:

Product Type:	Primary Antibodies
Applications:	WB
Recommended Dilution:	WB
Reactivity:	Human
Host:	Rabbit
Isotype:	IgG
Clonality:	Polyclonal
Immunogen:	The immunogen for Anti-CCDC86 Antibody is: synthetic peptide directed towards the N-terminal region of Human CCDC86. Synthetic peptide located within the following region: ESPQRQPEYSPESPRCQPKPSEEAPKCSQDQGVLA SELAQNKEELTPGAP
Formulation:	Liquid. Purified antibody supplied in 1x PBS buffer with 0.09% (w/v) sodium azide and 2% sucrose. <i>Note that this product is shipped as lyophilized powder to China customers.</i>
Conjugation:	Unconjugated
Storage:	Store at -20°C as received.
Stability:	Stable for 12 months from date of receipt.
Predicted Protein Size:	40 kDa
Gene Name:	coiled-coil domain containing 86
Database Link:	NP_077003 Entrez Gene 79080 Human Q9H6F5
Background:	The function of this protein remains unknown.
Synonyms:	FLJ22321; MGC2574
Note:	Immunogen sequence homology: Human: 100%; Horse: 79%; Bovine: 79%
Protein Families:	Druggable Genome



[View online »](#)

Product images:

Host: Rabbit; Target Name: CCDC86; Sample Tissue: MCF7 Whole Cell lysates; Antibody Dilution: 1.0ug/ml. CCDC86 is supported by BioGPS gene expression data to be expressed in MCF7