

Product datasheet for **TA331749**

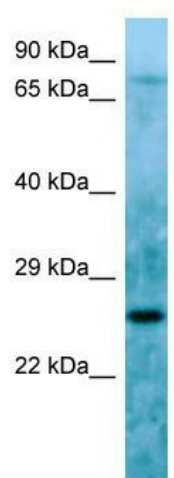
C11orf48 (LBHD1) Rabbit Polyclonal Antibody

Product data:

Product Type:	Primary Antibodies
Applications:	WB
Recommended Dilution:	WB
Reactivity:	Human
Host:	Rabbit
Isotype:	IgG
Clonality:	Polyclonal
Immunogen:	The immunogen for Anti-C11orf48 Antibody is: synthetic peptide directed towards the C-terminal region of Human C11orf48. Synthetic peptide located within the following region: RPRADHAAPPQEAGVQCTCQHYTVREEAQKTPPADPACPEREDSHGSGSP
Formulation:	Liquid. Purified antibody supplied in 1x PBS buffer with 0.09% (w/v) sodium azide and 2% sucrose.
Conjugation:	Unconjugated
Storage:	Store at -20°C as received.
Stability:	Stable for 12 months from date of receipt.
Predicted Protein Size:	29 kDa
Gene Name:	LBH domain containing 1
Database Link:	NP_077004 Entrez Gene 79081 Human Q9BQE6
Background:	The function of this protein remains unknown.
Synonyms:	C11orf48
Note:	Immunogen sequence homology: Human: 100%



[View online »](#)

Product images:

Host: Rabbit; Target Name: C11orf48; Sample
Tissue: HepG2 Whole Cell lysates; Antibody
Dilution: 1.0ug/ml