

Product datasheet for TA331747

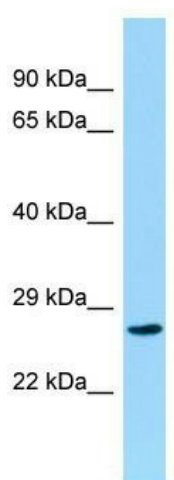
CCDC28B Rabbit Polyclonal Antibody

Product data:

Product Type:	Primary Antibodies
Applications:	WB
Recommended Dilution:	WB
Reactivity:	Human
Host:	Rabbit
Isotype:	IgG
Clonality:	Polyclonal
Immunogen:	The immunogen for Anti-CCDC28B Antibody is: synthetic peptide directed towards the C-terminal region of Human CCDC28B. Synthetic peptide located within the following region: GVTEGLPEEQKKTMAADRNLQLLSNLEDLSNSIQKLHLAENAEPEEQSAA
Formulation:	Liquid. Purified antibody supplied in 1x PBS buffer with 0.09% (w/v) sodium azide and 2% sucrose.
Conjugation:	Unconjugated
Storage:	Store at -20°C as received.
Stability:	Stable for 12 months from date of receipt.
Predicted Protein Size:	22 kDa
Gene Name:	coiled-coil domain containing 28B
Database Link:	NP_077272 Entrez Gene 79140 Human Q9BUN5
Background:	The product of this gene localizes to centrosomes and basal bodies. It interacts and colocalizes with several proteins associated with Bardet-Biedl syndrome (BBS).
Synonyms:	RP4-622L5.5
Note:	Immunogen sequence homology: Dog: 100%; Pig: 100%; Horse: 100%; Human: 100%; Guinea pig: 100%; Rat: 93%; Rabbit: 93%; Bovine: 92%; Mouse: 86%


[View online »](#)

Product images:



Host: Rabbit; Target Name: CCDC28B; Sample
Tissue: HeLa Whole cell lysates; Antibody Dilution:
1.0ug/ml