

## Product datasheet for **TA331744**

### PRDM14 Rabbit Polyclonal Antibody

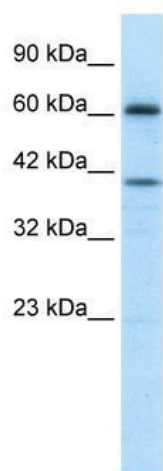
#### Product data:

Product Type:	Primary Antibodies
Applications:	IHC, WB
Recommended Dilution:	WB, IHC
Reactivity:	Human
Host:	Rabbit
Isotype:	IgG
Clonality:	Polyclonal
Immunogen:	The immunogen for Anti-PRDM14 Antibody: synthetic peptide directed towards the middle region of human PRDM14. Synthetic peptide located within the following region: GVTPSLEHPASLHHAISGLLVPPDSSGSDSLPQTLDKDSLQLPEGLCLMQ
Formulation:	Liquid. Purified antibody supplied in 1x PBS buffer with 0.09% (w/v) sodium azide and 2% sucrose. <i>Note that this product is shipped as lyophilized powder to China customers.</i>
Conjugation:	Unconjugated
Storage:	Store at -20°C as received.
Stability:	Stable for 12 months from date of receipt.
Predicted Protein Size:	64 kDa
Gene Name:	PR domain 14
Database Link:	<a href="#">NP_078780</a> <a href="#">Entrez Gene 63978 Human</a> <a href="#">Q9GZV8</a>
Background:	PRDM14 is part of a family of PR-domain genes that are involved in tumorigenesis.
Synonyms:	PFM11
Note:	Immunogen sequence homology: Human: 100%; Rabbit: 100%; Dog: 86%; Pig: 86%; Horse: 86%; Bovine: 86%
Protein Families:	Transcription Factors

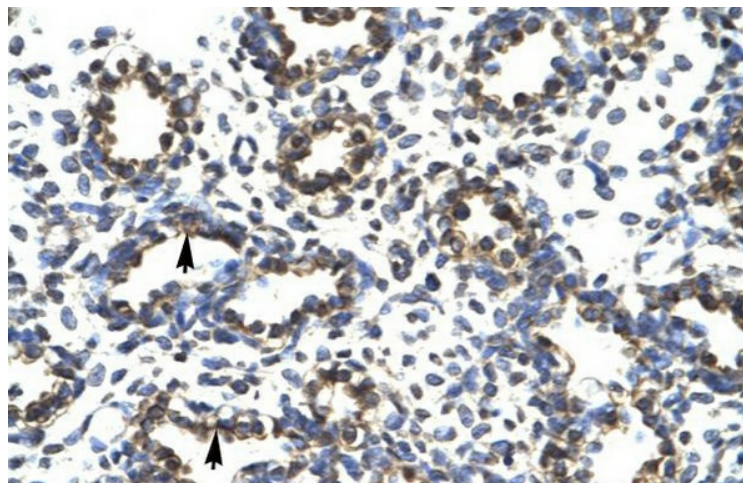


[View online »](#)

## Product images:



WB Suggested Anti-PRDM14 Antibody Titration:  
1.25ug/ml; ELISA Titer: 1: 312500; Positive  
Control: Jurkat cell lysate



Human Lung