

Product datasheet for **TA331743**

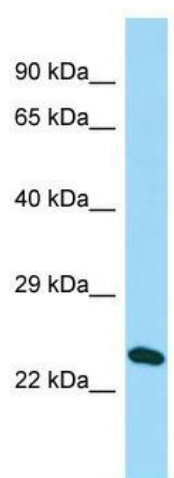
PA1 (PAGR1) Rabbit Polyclonal Antibody

Product data:

Product Type:	Primary Antibodies
Applications:	WB
Recommended Dilution:	WB
Reactivity:	Human
Host:	Rabbit
Isotype:	IgG
Clonality:	Polyclonal
Immunogen:	The immunogen for Anti-C16orf53 Antibody is: synthetic peptide directed towards the N-terminal region of Human C16orf53. Synthetic peptide located within the following region: GPSASAGKAEDEGEGGREETEREGSGGEEAQGEVPSAGGEEPAEEDSEDW
Formulation:	Liquid. Purified antibody supplied in 1x PBS buffer with 0.09% (w/v) sodium azide and 2% sucrose.
Conjugation:	Unconjugated
Storage:	Store at -20°C as received.
Stability:	Stable for 12 months from date of receipt.
Predicted Protein Size:	28 kDa
Gene Name:	PAXIP1 associated glutamate rich protein 1
Database Link:	NP_078792 Entrez Gene 79447 Human Q9BTK6
Background:	The function of this protein remains unknown.
Synonyms:	C16orf53; GAS; PA1
Note:	Immunogen sequence homology: Human: 100%; Rabbit: 92%; Goat: 85%; Bovine: 85%; Pig: 83%; Horse: 83%



[View online »](#)

Product images:

Host: Rabbit; Target Name: C16orf53; Sample Tissue: HeLa Whole cell lysates; Antibody Dilution: 1.0ug/ml; PAGR1 is supported by BioGPS gene expression data to be expressed in HeLa