

Product datasheet for TA331742

CARS2 Rabbit Polyclonal Antibody

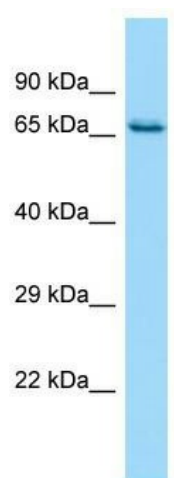
Product data:

| | |
|-------------------------|---|
| Product Type: | Primary Antibodies |
| Applications: | WB |
| Recommended Dilution: | WB |
| Reactivity: | Human |
| Host: | Rabbit |
| Isotype: | IgG |
| Clonality: | Polyclonal |
| Immunogen: | The immunogen for Anti-CARS2 Antibody is: synthetic peptide directed towards the N-terminal region of Human CARS2. Synthetic peptide located within the following region: GNAYSTAKGNVYFDLKSRGDKYGKLVGVPGVGPADSDKRHASDFALW |
| Formulation: | Liquid. Purified antibody supplied in 1x PBS buffer with 0.09% (w/v) sodium azide and 2% sucrose. <i>Note that this product is shipped as lyophilized powder to China customers.</i> |
| Conjugation: | Unconjugated |
| Storage: | Store at -20°C as received. |
| Stability: | Stable for 12 months from date of receipt. |
| Predicted Protein Size: | 62 kDa |
| Gene Name: | cysteinyl-tRNA synthetase 2, mitochondrial (putative) |
| Database Link: | NP_078813 Entrez Gene 79587 Human Q9HA77 |
| Background: | The function of this protein remains unknown. |
| Synonyms: | COXPD27; cysRS |
| Note: | Immunogen sequence homology: Human: 100%; Dog: 93%; Horse: 93%; Pig: 92%; Guinea pig: 92%; Bovine: 86%; Rabbit: 86%; Rat: 85%; Mouse: 85% |
| Protein Families: | Druggable Genome |
| Protein Pathways: | Aminoacyl-tRNA biosynthesis |



[View online »](#)

Product images:



Host: Rabbit; Target Name: CARS2; Sample
Tissue: HepG2 Whole Cell lysates; Antibody
Dilution: 1.0ug/ml