

Product datasheet for TA331740

DHX40 Rabbit Polyclonal Antibody

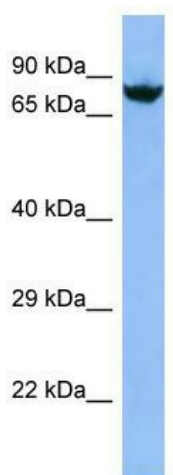
Product data:

Product Type:	Primary Antibodies
Applications:	WB
Recommended Dilution:	WB
Reactivity:	Human
Host:	Rabbit
Isotype:	IgG
Clonality:	Polyclonal
Immunogen:	The immunogen for Anti-DHX40 Antibody is: synthetic peptide directed towards the C-terminal region of Human DHX40. Synthetic peptide located within the following region: KQLKDGISKDVLKMKQRNDDKSISDARARFLERKQQRQTQDHS DTRKETG
Formulation:	Liquid. Purified antibody supplied in 1x PBS buffer with 0.09% (w/v) sodium azide and 2% sucrose. <i>Note that this product is shipped as lyophilized powder to China customers.</i>
Conjugation:	Unconjugated
Storage:	Store at -20°C as received.
Stability:	Stable for 12 months from date of receipt.
Predicted Protein Size:	86 kDa
Gene Name:	DEAH-box helicase 40
Database Link:	NP_078888 Entrez Gene 79665 Human Q8IX18
Background:	This gene encodes a member of the DEXH/D box family of ATP-dependent RNA helicases that have an essential role in RNA metabolism. Alternate splicing results in multiple transcript variants. A pseudogene of this gene is found on chromosome 17.
Synonyms:	ARG147; DDX40; PAD
Note:	Immunogen sequence homology: Human: 100%; Dog: 93%; Pig: 86%; Rat: 86%; Horse: 86%; Mouse: 86%; Bovine: 86%; Guinea pig: 86%



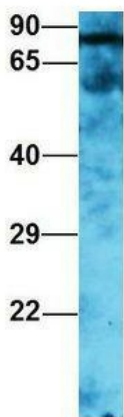
[View online »](#)

Product images:



Host: Rabbit; Target Name: DHX40; Sample Tissue: Jurkat Whole Cell lysates; Antibody Dilution: 1.0ug/ml

DHX40



Rabbit Anti-DHX40
 Sample Type: Human Fetal Heart
 Antibody Concentration: 1ug/mL

Host: Rabbit; Target Name: DHX40; Sample Tissue: Human Fetal Heart; Antibody Dilution: 1.0ug/ml