

Product datasheet for **TA331739**

Importin4 (IPO4) Rabbit Polyclonal Antibody

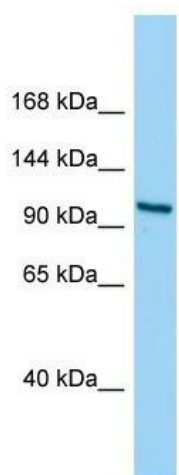
Product data:

Product Type:	Primary Antibodies
Applications:	WB
Recommended Dilution:	WB
Reactivity:	Human
Host:	Rabbit
Isotype:	IgG
Clonality:	Polyclonal
Immunogen:	The immunogen for Anti-IPO4 Antibody is: synthetic peptide directed towards the middle region of Human IPO4. Synthetic peptide located within the following region: NLGPKVQPYLPELMECMLQLLRNPSSPRAKELAVSALGAIATAAQASLLP
Formulation:	Liquid. Purified antibody supplied in 1x PBS buffer with 0.09% (w/v) sodium azide and 2% sucrose. <i>Note that this product is shipped as lyophilized powder to China customers.</i>
Conjugation:	Unconjugated
Storage:	Store at -20°C as received.
Stability:	Stable for 12 months from date of receipt.
Predicted Protein Size:	119 kDa
Gene Name:	importin 4
Database Link:	NP_078934 Entrez Gene 79711 Human Q8TEX9
Background:	The function of this protein remains unknown.
Synonyms:	Imp4
Note:	Immunogen sequence homology: Dog: 100%; Pig: 100%; Horse: 100%; Human: 100%; Guinea pig: 100%; Rat: 93%; Rabbit: 93%; Bovine: 79%
Protein Families:	Druggable Genome



[View online »](#)

Product images:



Host: Rabbit; Target Name: IPO4; Sample Tissue: HeLa Whole Cell lysates; Antibody Dilution: 1.0ug/ml; IPO4 is supported by BioGPS gene expression data to be expressed in HeLa