

Product datasheet for **TA331738**

C1orf113 (SH3D21) Rabbit Polyclonal Antibody

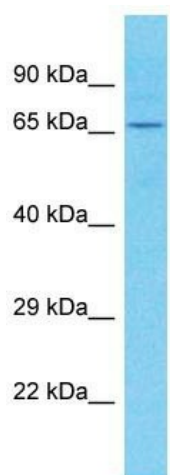
Product data:

Product Type:	Primary Antibodies
Applications:	WB
Recommended Dilution:	WB
Reactivity:	Human
Host:	Rabbit
Isotype:	IgG
Clonality:	Polyclonal
Immunogen:	The immunogen for Anti-SH3D21 Antibody is: synthetic peptide directed towards the C-terminal region of Human SH3D21. Synthetic peptide located within the following region: ERAFAQKTRPIKPPPDSQETLALPSLVPQNYTENKNEGVDVTSRGEVES
Formulation:	Liquid. Purified antibody supplied in 1x PBS buffer with 0.09% (w/v) sodium azide and 2% sucrose.
Conjugation:	Unconjugated
Storage:	Store at -20°C as received.
Stability:	Stable for 12 months from date of receipt.
Predicted Protein Size:	70 kDa
Gene Name:	SH3 domain containing 21
Database Link:	NP_078952 Entrez Gene 79729 Human A4FU49
Background:	The function of this protein remains unknown.
Synonyms:	C1orf113
Note:	Immunogen sequence homology: Human: 100%



[View online »](#)

Product images:



Host: Rabbit
Target Name: SH3D21
Sample Tissue: Placenta Lysate
Antibody Dilution: 1.0 μ g/ml

Host: Rabbit; Target Name: SH3D21; Sample
Tissue: Placenta lysates; Antibody Dilution:
1.0ug/ml